

Tempo = ♩ 160

MARIA

Transcription:
Yves Démoulin

Blondie

Intro guitar comp



COUPLÉ



13



17



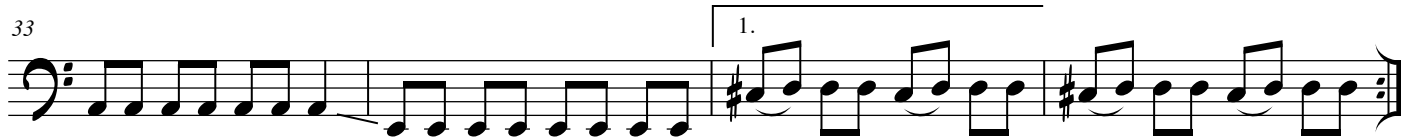
25 *Prérefrain*



29 **REFRAIN**



33



37



49



53 *Prérefrain*

57 **REFRAIN**

61

65 1. 2.

69 1. *Prérefrain vocal* 2. *Prérefrain instrumental* **To CODA**

73 **COUplet**

77

81

86 **CODA** **PONT**

91

95

99 **REFRAIN OUTRO**

103 *Repeat ad lib & fade...*