



THE JOY OF CREATION

Step into the magical world of FM WORLD products. Browse the pages of this exclusive catalogue to take a journey through the wonderful world of fragrances, intense colours and exceptional opportunities. The cooperation of scientists and technologists as well as drawing from what's precious in nature allowed us to create new unique products. We ascended to the heights of modern science and topped it with a pinch of magic. We did it to give you the certainty that when reaching for our products, you chose top-notch quality!

The time of publication of the catalogue you're holding in your hands, is primarily a time of great premieres. We're revealing three fabulous brands - UTIQUE exceptional perfumes and oils, a line of unique FONTAINAVIE products and NUTRICODE innovative supplementation systems. We put our hearts and tremendous work into creation of each and every one of these by carefully selecting the best ingredients and passionately designing new packages.

When I look ahead I see that the future belongs to FM WORLD!
It wouldn't be possible without you. Thank you!



Artur Trawiński
FM WORLD

CONTENTS

UTIQUE	pp. 4-11
Natural oils	pp. 8-9
Exclusive perfume	pp. 10-11
FONTAINAVIE	pp. 12-15
Lift Extreme Eye Serum	pp. 14-15
FEDERICO MAHORA PERFUMES	pp. 16-49
FEDERICO MAHORA SKIN CARE	pp. 50-71
Complete Care Cream	pp. 52-53
MAKE UP	pp. 72-101
Fragrance List	p. 102
List of products according to Fragrance Families	p. 103



UTIQUE



UNIQUE EXPERIENCE

The most valuable oils, sophisticated recipes and rich compositions – enter the world of luxury with us! We created the unique UTIQUE brand from the dream of perfection and perfect harmony of the body and the spirit. Fragrances composed to reflect beauty, harmony and life energy. Fragrances composed to reflect the beauty, harmony and life energy. Skin and hair care oils designed to add mystery and sensual experience to everyday moments.



UTIQUE

UTIQUE is a new name in the universe of luxury perfumes and cosmetics, arranged like a bouquet of sensorial variations. Composed to capture beauty, equilibrium and vitality. Created to affect our existence by adding a touch of luxury to everyday moments. To make life full of passion. UTIQUE is excellence, for those who desire to escape into the world of class and sophistication.

Enter the chic atelier and meet the alchemist, who creates the most precious elixir compositions: three mystical fragrances and two natural oils.



Natural Oils

UTIQUE oils are liquid gold, a treasure which turns everyday care into an indescribable pleasure. By using the blending technique we combined several precious oils so that their effects complemented one another providing rejuvenation, moisturisation and regeneration of the skin. Natural origin is the secret of their power. UTIQUE face and hair oils contain no preservatives, are rich in valuable vitamins, whereas organic certifications confirm top quality origin of selected ingredients.



Tradition and Modernity

In ancient times perfumes were made from natural raw materials and usually had the form of oils and lotions. Initially, only the rulers and the wealthiest citizens had access to these exclusive products. UTIQUE perfumes go back to the roots of classic perfumery where carefully selected natural oils and the notes of nature are combined into an unparalleled quality. Created according to secret recipes, based on precious ingredients. Embodiment of greatness, mystery and exoticism. True masterpieces.



Fragrance is Art

Luxury, elegance, wealth of top quality ingredients – the dream of perfection as well as full harmony of the body and the spirit – this is what the UTIQUE perfumes were born from. To offer the quality that so far could have been experienced when visiting small, highly exclusive boutiques in small districts of the world's fashion capitals. Drawing upon the knowledge of world class senseliers, UTIQUE perfumes are a line of niche fragrances made with top quality ingredients – elixirs with high concentration of essential oils. Perfection, created for those who wish to escape from everyday life and head towards the most sophisticated experiences.



UTIQUE

Fall in love with the natural wealth of precious ingredients

- **Neroli oil** prevents capillaries.
- **Argan oil** has anti-wrinkle and rejuvenating properties.
- **Rosa Mosqueta oil** reduces wrinkles and inhibits the formation of new ones.
- **Nigella oil** supports the elimination of blackheads and imperfections.
- **Jojoba oil** closes the pores, moisturizes the skin and improves its firmness.
- **Sunflower oil** increases the elasticity of the skin, slows down the ageing process.
- **Soybean oil** restores the natural protective barrier of the skin by improving its hydration.
- **Castor oil** is a powerful antioxidant, acts as a protective barrier for the skin.
- **Calendula oil** strengthens blood vessels, has regenerating properties.
- **Evening primrose oil** moisturizes and soothes irritations of the skin.
- **Geranium oil** cleanses and nourishes irritation.
- **Ylang-ylang essential oil** relieves inflammation.
- **Jasmine oil** supports natural skin cell renewal.



LUXURY FACE OIL

LUXURY FACE OIL

An exclusive composition of 13 precious oils and essential oils of plant origin. The unique formula created from the most valuable natural ingredients which complement one another thanks to the blending technique. Restores healthy and radiant appearance. Contains a highly concentrated dose of vitamins and antioxidants, providing intensive skin nutrition, hydration and regeneration. The irreplaceable neroli oil, as well as Rosa Mosqueta, argan and jojoba oils reduce wrinkles, delay skin ageing and have a rejuvenating effect.

- ▶ excellent under make-up, for day and night
- ▶ 100% natural, contains no preservatives

30 ml | 502004

We use what is best in natural essential oils: their wonderful fragrance – in our oriental-woody perfumes, and their nourishing properties – in our face and hair cosmetics. Experience their power!

Natural power for your hair

- **Jojoba oil** stimulates hair growth.
- **Linseed oil** eliminates the problem of hair loss.
- **Apricot kernel oil** nourishes dry and damaged hair.
- **Argan oil** deeply nourishes and rebuilds hair, adds shine, tames and improves its condition, preventing split ends.
- **The essential ylang-ylang oil** has toning properties.



LUXURY HAIR REPAIR OIL

LUXURY HAIR REPAIR OIL

Its powers lie in a unique combination of natural, certified oils derived from the very heart of plants. A sophisticated marriage of apricot kernel, linseed, jojoba and argan oil makes the hair visibly stronger, nourished and moisturized. Revives the hair colour and adds shine, leaving it soft, smooth and velvety to the touch.

- ▶ absorbs perfectly and does not weigh the hair down
- ▶ does not contain preservatives

50 ml | 502005

UTIQUE



PERFUME

Fragrance: 20% | Capacity: 100 ml

RUBY | 502003

Magnetism, passion, seduction, the most wonderful emotions locked in glass.

UTIQUE Ruby is an escape from everyday life, the mystical journey into the depths of the human soul. Feel the gentle caress, let it awaken your senses. Understand the spirit of sensuality.

Type: magnetic, attractive, seductive

Fragrance notes:

Head notes: cashmere wood, jasmine, cistus

Heart notes: vanilla, amberwood, balmy

Base note: white oud, black musk, dry wood

GOLD | 502002

The essence of oriental splendour.

Perfumes which dazzle like gold and are exquisite like handcrafted jewellery. An esoteric experience, desire for passion, an elegant grace of temptation...

UTIQUE Gold sublimates your value. Majestuous, essential, inspiring.

Type: luxurious, exquisite

Fragrance notes:

Head notes: pink pepper, cedarwood, nutmeg

Heart notes: orris, saffron, vetiver

Base note: cypriol, patchouli, black musk, amber

BLACK | 502001

Gives a unique meaning to what is precious, intoxicates, captivates and enchants.

It's a scent of a secret dimension where warmth meets sensuality.

UTIQUE Black is the epitome of elegance, addictiveness and confidence.

An intriguing, memorable and legendary fragrance.

Type: elegant, sophisticated, mysterious

Fragrance notes:

Head notes: woody, saffron, styrax

Heart notes: vetiver, amber, vanilla

Base note: leather, sandalwood, amberwood



FONTAINAVIE

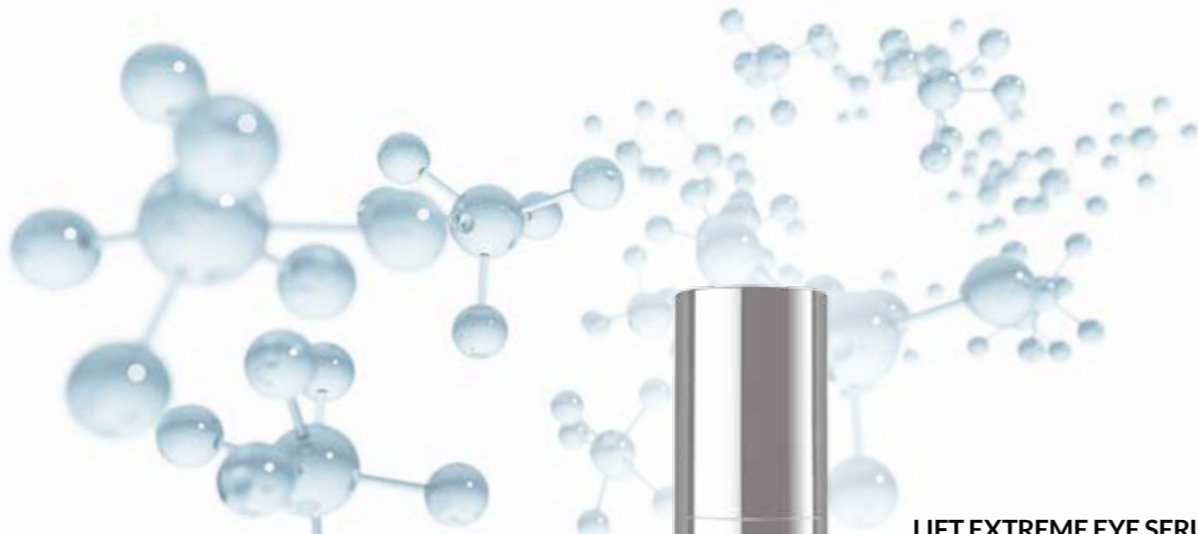
THE SECRET OF YOUNG SKIN

The most advanced labs are where researchers investigate the secret of young, firm and tight skin. Legends about the source of eternal youth are no longer a myth. We use the latest technologies and scientific breakthroughs by specialists from all over world to keep youthful appearance for longer.

FONTAINAVIE

Advanced technology makes it possible to delay the skin ageing process. This is why we created FONTAINAVIE – specialised anti-ageing cosmetics based on the latest scientific findings and with effectiveness incomparable to other products available on the market.

Meet the first of them – the Lift Extreme Eye Serum which guarantees spectacular effects in a few minutes. It is a perfect alternative to Botulinum toxin and contains the innovative Argireline created in a laboratory of an American biochemist and Nobel Prize winner.



PERFECTION IN EVERY BIT

When creating the Lift Extreme Eye Serum we took care for every detail. To ensure precise, hygienic and convenient application, we locked the Serum in an airless pump bottle.



LIFT EXTREME EYE SERUM

LIFT EXTREME EYE SERUM

An exclusive skin lifting serum, precisely reduces fine lines, wrinkles and puffy eyes. Through a combination of the Pentapeptide-18 and Hexapeptide-8 it works like Botox, tensioning, firming and smoothing the skin.

- ▶ **an immediate lifting effect**
- ▶ **puffy eye reduction and elasticity improval**
- ▶ **reduced visibility of pores**
- ▶ **for use under the eyes and on selected parts of the face**

5 ml | 503001

HOW DOES IT WORK?

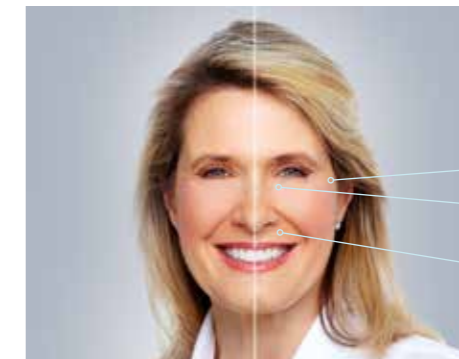
- **Extraordinary, synergistic peptide effect:** **Pentapeptide-18** and **Hexapeptide-8** is an alternative to the Botulinum toxin (Botox). It relaxes the muscles, thus reduces the appearance of wrinkles.
- **Tetrapeptide-5** is a intensely moisturizing substance. It regulates the microcirculation, eliminates puffy eyes resulting from accumulation of liquid in the intercellular spaces and improves skin elasticity.
- **Argireline** blocks the release of neurotransmitters, effectively weakens the muscle spasms, reducing the depth of wrinkles. It is responsible for the firm, elastic skin.
- Combination of two **silicic acid salts** reduces visibility of pores and wrinkles as well as evens out the skin structure.
- **Vegetable protein hydrolyzed** envelops the skin, instantly smooths wrinkles and imperfections visible on its surface.



EXCELLENT ANTI-AGEING EFFECT

Youth elixir for your skin

A highly concentrated serum with a unique formula is a specialist rejuvenating treatment. It is highly effective – lasts for as many as 25 applications. The Pentapeptide-18 and Hexapeptide-8 guarantee an immediate lifting effect. Facial skin rejuvenation has never been so simple! Just 2-3 minutes are enough to visibly smooth the wrinkles and make the skin firm. This is an excellent cosmetic product before an important meeting, a night out, as well as for everyday use.



ONE SERUM - MANY APPLICATIONS

- crow's feet
- wrinkles around the eyes
- nasolabial furrows



- forehead lines
- eyebrow wrinkles
- the lion wrinkle

FEDERICO MAHORA

IN THE CHARMING WORLD OF PERFUME

Fragrances have been with us forever. They are around us, enchant us every day. When combined with pleasant moments, they sink deep into our minds. Perfumes emphasize our personality, are a label of our taste and temper. Among our exceptional collections you will surely find ones that will inspire you to dream. They will boost your self-confidence and be simply yours.



PURE

Woman

PERFUME
fragrance: 20% | capacity: 50 ml



WITH A FRUITY NOTE

WOODY elegant and classy

Sensual, mysterious, unconventional and elegant... a perfect narrative of the family of woody fragrances. It also describes the women who choose it: self-confident and attention-drawing.

PURE 422 100422

Type: carefree, gentle, cool
Fragrance notes:
Head notes: bergamot, pineapple, water notes
Heart notes: jasmine, honeysuckle, rose
Base notes: patchouli, white musk, ambergris

WITH AN ORIENTAL NOTE

PURE 425 100425

Type: classy, incredibly stylish
Fragrance notes:
Head notes: pear, cardamom, bergamot
Heart notes: frangipani, freesia, jasmine, violet
Base notes: vanilla, sandalwood, musk



ORIENTAL strong and untamed

Fragrances associated with Far East countries, reminiscent of exotic trips, mysterious places and intriguing situations. Perfect for daring and sensual women.

WITH A FLORAL NOTE

PURE 09 100009

Type: deeply memorable, magical
Fragrance notes:
Head notes: violet, cardamom, green fruits
Heart notes: almond, jasmine
Base notes: vanilla, musk

PURE 101 100101

Type: sophisticated, unforgettable
Fragrance notes:
Head notes: orange blossom, pear
Heart notes: ginger, incense
Base notes: sandalwood, vanilla, honey, musk

PURE 257 100257

Type: exquisite, surprising
Fragrance notes:
Head notes: rose, honeysuckle, tangerine
Heart notes: daisy, jasmine
Base notes: musk, patchouli

PURE 263 100263

Type: strong, vintage
Fragrance notes:
Head notes: aldehyde, fruit notes, citrus fruits
Heart notes: lily of the valley, heliotrope, jasmine, tuberose
Base notes: musk, tropical wood

PURE 402 100402

Type: enticing, full of extremes
Fragrance notes:
Head notes: pink pepper, grapefruit, tangerine
Heart notes: coffee, plumeria, peony
Base notes: musk, vanilla, wood notes

PURE 404 100404

Type: captivating, seductive
Fragrance notes:
Head notes: lychee, lily of the valley, tangerine
Heart notes: tuberose
Base notes: sandalwood, musk

PURE 423 100423

Type: sensual, romantic
Fragrance notes:
Head notes: pear, nectarine, mandarin, bergamot
Heart notes: iris, freesia, jasmine, African orange blossom
Base notes: vanilla, tonka bean, heliotrope, cedarwood

PURE 424 100424

Type: romantic, fairy-tale-like, expressive
Fragrance notes:
Head notes: mandarin, apple, peach
Heart notes: jasmine, lily, lily of the valley
Base notes: sandalwood, vanilla, musk, heliotrope

WITH A FRUITY NOTE

PURE 12 100012

Type: hypnotising, seductive
Fragrance notes:
Head notes: passion flower
Heart notes: jasmine, gardenia
Base notes: vanilla, maple, vetiver

PURE 98 100098

Type: fresh, subtle
Fragrance notes:
Head notes: blackcurrant, bergamot, lemon
Heart notes: jasmine, lily of the valley, rose
Base notes: sandalwood, cedar, amber

PURE 413 100413

Type: very sweet, slightly flirtatious
Fragrance notes:
Head notes: blackcurrant, pear
Heart notes: orris, jasmine, orange blossom
Base notes: chocolate pralines, patchouli, vanilla

WITH A VANILLA NOTE

PURE 417 100417

Type: mesmerizing, seductive sweetness
Fragrance notes:
Head notes: apple blossom, basil, nectarine
Heart notes: heliotrope, gardenia, pittosporum
Base notes: sandalwood, musk, vanilla, oakmoss, cedarwood

WITH A WOODY NOTE

PURE 26 100026

Type: warming, enveloping
Fragrance notes:
Head notes: guava, raspberry, bergamot, coconut
Heart notes: water lily, rose, pepper, magnolia
Base notes: sandalwood, vanilla, coffee, caramel

WITH A SPICY NOTE

PURE 24 100024

Type: exotic, very spicy
Fragrance notes:
Head notes: tangerine, cumin and clove
Heart notes: mango, heliotrope, cardamom, ylang-ylang
Base notes: musk, vanilla, ambergris



PURE 173 100173

Type: dreamlike, dim
Fragrance notes:
Head notes: anise, licorice
Heart notes: Jacaranda wood, bitter almond
Base notes: sandalwood, musk, moss

PURE 177 100177

Type: triggering desires, warm
Fragrance notes:
Head notes: bergamot, bay leaf, pink pepper
Heart notes: saffron, orange blossom
Base notes: incense, vanilla, sandalwood

WITH AN AMBERGRIS NOTE

PURE 32 100032

Type: fascinating, ambiguous
Fragrance notes:
Head notes: melon, coconut, tangerine, cotton candy
Heart notes: blackberry, mango, plum, honey
Base notes: vanilla, chocolate, toffee



PURE

Woman

PERFUME
fragrance: 20% | capacity: 50 ml



FLORAL

beautiful and feminine

This is the most comprehensive family of fragrances, so go ahead and experiment with scents!

Change them depending on the occasion! The romantic, intimidating and sensual character of these perfumes was actually created to emphasize femininity.



WITH AN ALDEHYDE NOTE

PURE 21 100021

Type: classic, warm and enveloping

Fragrance notes:

Head notes: aldehyde, ylang-ylang, orange blossom

Heart notes: rose, lily of the valley, iris
Base notes: civet, oakmoss, sandalwood

PURE 418 100418

Type: chic, modern, dynamic

Fragrance notes:

Head notes: apple, water notes, violet
Heart notes: rose, aldehydes, gardenia
Base notes: musk, sandalwood, ambergris

WITH A FRUITY NOTE

PURE 10 100010

Type: stimulating, sweet

Fragrance notes:

Head notes: mandarin, ivy leaves, champaca flowers

Heart notes: jasmine, African orchid, rose

Base notes: amaranth wood, blackberry, musk

PURE 17 100017

Type: stimulating, sweet

Fragrance notes:

Head notes: melon, peach, apple
Heart notes: freesia, lily, mimosa, tuberose, jasmine

Base notes: cedar, ylang-ylang, musk

PURE 25 100025

Type: harmonious, slightly brash

Fragrance notes:

Head notes: green apple, water accents
Heart notes: jasmine, freesia, iris, passion

Base notes: sandalwood, cedar, vanilla

PURE 29 100029

Type: hot, even tropical

Fragrance notes:

Head notes: passion fruit, redcurrant
Heart notes: cyclamen, peony
Base notes: musk, patchouli

PURE 125 100125

Type: spinning, optimistic

Fragrance notes:

Head notes: citrus fruits, green peas, mandarin

Heart notes: green apple, gardenia, datura, pralines

Base notes: apple tree, cedar, almonds

PURE 180 100180

Type: seductive, changeable

Fragrance notes:

Head notes: lychee, raspberry, rose
Heart notes: freesia, lily of the valley, cedar

Base notes: vanilla, amber, vetiver

PURE 181 100181

Type: playful and flirtatious

Fragrance notes:

Head notes: redcurrant, citrus, water lily

Heart notes: lily of the valley, sugar, rushes, rose

Base notes: cedar, musk

PURE 271 100271

Type: slightly flirty but toned down

Fragrance notes:

Head notes: kiwi, papaya, pomegranate
Heart notes: lily of the valley, orchid, hibiscus

Base notes: cedar, ambergris

PURE 272 100272

Type: fresh and energising

Fragrance notes:

Head notes: blackcurrant leaves, freesia, raspberry, tangerine

Heart notes: orris, violet, mimosa

Base notes: sandalwood, vanilla, musk

PURE 400 100400

Type: optimistic, alluring

Fragrance notes:

Head notes: bergamot, belladonna
Heart notes: water lily, hibiscus, pomegranate

Base notes: musk, cedar

PURE 412 100412

Type: full of emotion, energetic

Fragrance notes:

Head notes: champagne, fruit notes
Heart notes: peach blossom

Base notes: ambergris, white musk, woody notes

PURE 415 100415

Type: glamour, sweet and fresh at the same time

Fragrance notes:

Top notes: strawberry, blackberry, musk

Heart notes: May rose, rose, peony

Base notes: resin amber, cashmere wood, pralines

PURE 416 100416

Type: carefree, full of charming grace

Fragrance notes:

Head notes: mandarin, Sicilian lemon, red berries, clementine

Heart notes: nectarine, jasmine, freesia

Base notes: musk, cedarwood

Fragrance family: floral

PURE 420 100420

Type: seductively sweet, tempting

Fragrance notes:

Head notes: red fruits, mandarin
Heart notes: lily of the valley, peony

Base notes: praline, amber, musk, caramel

WITH AN ORIENTAL NOTE

PURE 20 100020

Type: seductive, sensual

Fragrance notes:

Top notes: osmanthus, black tea, bergamot

Heart notes: rose, freesia, magnolia, orchid

Base notes: musk, patchouli

PURE 97 100097

Type: delightful, velvety

Fragrance notes:

Top notes: freesia, lily of the valley, rose

Heart notes: lily, gardenia, palm tree, daffodil

Base notes: blackcurrant, musk, oakmoss

PURE 132 100132

Type: exclusive, intense

Fragrance notes:

Top notes: ginger, cardamom, pepper, orange

Heart notes: tuberose, coconut, gardenia, peony

Base notes: ambergris, musk

PURE 183 100183

Type: sharp, strong

Fragrance notes:

Top notes: cranberry, pink pepper, tamarind

Heart notes: black violet, cacao, rose, hellebore

Base notes: patchouli, vanilla, Massoia wood

PURE 401 100401

Type: sweet, playful

Fragrance notes:

Top notes: pink pepper, redcurrant
Heart notes: jasmine petals, rose, peony

Base notes: panna cotta, patchouli, musk

WITH A WATER NOTE

PURE 07 100007

Type: balanced, mild

Fragrance notes:

Top notes: pineapple, peony, sweet pea

Heart notes: freesia, jasmine, lily

Base notes: sandalwood, cedar, musk

PURE 174 100174

Type: magical, flickering

Fragrance notes:

Top notes: freesia, lychee
Heart notes: lily, magnolia, jasmine, ginger, pepper

Base notes: amber, musk

WITH A GREEN NOTE

PURE 01 100001

Type: cool and warm at the same time

Fragrance notes:

Head notes: lemon, tea, cranberry
Heart notes: jasmine, peony, water lily

Base notes: woody notes, patchouli

PURE 81 100081

Type: eccentric but subtle

Fragrance notes:

Head notes: green apple, cucumber, magnolia

Heart notes: lily of the valley, rose, violet

Base notes: sandalwood, ambergris

WITH A WOODY NOTE

PURE 414 100414

Type: independent, very feminine

Fragrance notes:

Head notes: cactus
Heart notes: pink freesia, jasmine, rose

Base notes: cedar, woody notes



PURE

Woman

PERFUME
fragrance: 20% | capacity: 50 ml



CHYPRE

alluring and enticing

The family of chypre fragrances evokes the smell of silk scarves and elegant gloves. Suitable for women with strong character, intriguing and sensual. The chypre note gives you courage.

WITH A FLORAL NOTE

PURE 421

100421

Type: undeniably feminine, edgy

Fragrance notes:

Head notes: grapefruit, peach, green leaves

Heart notes: rose, orange blossom, tuberose, peony, iris

Base notes: patchouli, ambergris, vanilla, musk

WITH A WOODY NOTE

PURE 18

100018

Type: radiant, alluring

Fragrance notes:

Head notes: orange, orange blossom

Heart notes: rose, jasmine, ylang-ylang

Base notes: white musk, vetiver, tonka bean, vanilla



CITRUS

joyful and energetic

Are you sociable, cheerful and energetic? Do you appreciate freedom, ease and comfort in life?

Citrus scents give you an energy boost, highlight your temperament and put you in a good mood.

WITH A FRUITY NOTE

PURE 419

100419

Type: optimistic, casual

Fragrance notes:

Head notes: citrus fruits, grapefruit, bergamot, water notes, calone, melon, peach

Heart notes: woody notes, jasmine, lily of the valley

Base notes: musk, ambergris

WITH A LEMON NOTE

PURE 33

100033

Type: refreshing, joyful

Fragrance notes:

Head notes: mango, Sicilian lemon, apple

Heart notes: jasmine, bamboo, white rose

Base notes: cedar, ambergris

WITH A FRUITY NOTE

PURE 05

100005

Type: intriguing, modern

Fragrance notes:

Head notes: freesia, gardenia

Heart notes: sandalwood, rose, coriander

Base notes: vanilla, vetiver, patchouli

PURE 16

100016

Type: fabulous, fascinating

Fragrance notes:

Head notes: tangerine, pear, green notes

Heart notes: orchid

Base notes: patchouli, toffee

PURE 34

100034

Type: free, joyful

Fragrance notes:

Head notes: iris, pineapple, hyacinth, pink pepper

Heart notes: jasmine, lemon

Base notes: vanilla, vetiver, musk

PURE 80

100080

Type: surprising, appetising

Fragrance notes:

Head notes: strawberry sorbet, cherry, pineapple

Heart notes: caramelised popcorn, violet, rose

Base notes: musk, ambergris, patchouli



WITH A MANDARIN NOTE

PURE 23

100023

Type: sensual, with a bit of sweetness

Fragrance notes:

Head notes: lily of the valley, red orange

Heart notes: tangerine, jasmine, rose

Base notes: vanilla, sandalwood, white musk

WITH AN ORANGE NOTE

PURE 06

100006

Type: ethereal, discrete

Fragrance notes:

Head notes: lemon, bergamot, mint

Heart notes: orange, green tea

Base notes: oakmoss, ambergris

PURE

Man

PERFUME
fragrance: 20% | capacity: 50 ml



CHYPRE

sensual,
attention-grabbing

Bold, strong, stylish and elegant fragrances. Their clear, yet fresh scent remains the memory for a long time.

WITH A WOODY NOTE

PURE 56

100056

Type: inflaming senses, vibrating
Fragrance notes:
Head notes: grapefruit, lavender, nutmeg flower, honeysuckle
Heart notes: raspberry, heliotrope, clove
Base notes: cedar, resin, juniper

WITH A NOTE OF AMBERGRIS AND MUSK

PURE 110

100110

Type: a little brash, rebellious
Fragrance notes:
Head notes: lavender, bergamot, cardamom
Heart notes: orange blossom, lily of the valley
Base notes: musk, ambergris, vanilla



FOUGERE

seductively masculine

Designed for men who appreciate the classics and value traditional masculinity canons. Compositions, which represent professionalism and emphasise the style of a mature man.

WITH A LAVENDER NOTE

PURE 54

100054

Type: ambiguous, fresh
Fragrance notes:
Head notes: mint, bergamot, rum
Heart notes: cedar, sage, lavender
Base notes: oakmoss, vetiver, suede

PURE 63

100063

Type: seductive, provocative
Fragrance notes:
Head notes: lemon, pink pepper
Heart notes: lavender, orange blossom
Base notes: patchouli, cedar, ambergris

PURE 68

100068

Type: charismatic, stimulating
Fragrance notes:
Head notes: lemon, bergamot
Heart notes: iris, lavender, cardamom
Base notes: tobacco, cedar, sandalwood

PURE 189

100189

Type: essential, strong
Fragrance notes:
Head notes: anise star, red pepper, grapefruit
Heart notes: raspberry, lavender
Base notes: heliotrope, vetiver

PURE 464

100464

Type: holiday, discreet, fresh
Fragrance notes:
Head notes: bergamot, lemon, lavender, melon, pineapple leaf
Heart notes: juniper, freesia, coriander
Base notes: sandalwood, oakmoss, musk, cedarwood

WITH A FERN NOTE

PURE 43

100043

Type: energizing, eye-catching
Fragrance notes:
Head notes: tangerine, kumquat, pink pepper
Heart notes: coriander, freesia, cardamom
Base notes: leather notes, Jacaranda tree

PURE 135

100135

Type: surprising, intense
Fragrance notes:
Head notes: bitter orange, tangerine
Heart notes: santolina, sea grass
Base notes: ambergris, woody notes

PURE

Man

PERFUME
fragrance: 20% | capacity: 50 ml



ORIENTAL strong, dazzling

Particularly intense, powerful and provocative fragrances which stimulate imagination. Ideal for autumn and winter days and special occasions. This is how self-confident men smell.



WITH A FLORAL NOTE

PURE 52 100052

Type: catchy, spirited
Fragrance notes:
Head notes: apple, bergamot, mint
Heart notes: jasmine, geranium, lavender
Base notes: cinnamon, clove, musk

PURE 465 100465

Type: suggestive, aromatic
Fragrance notes:
Head notes: cardamom, bergamot, lemon, mint, orange
Heart notes: sage, lavender, orange blossom, tonka bean, petitgrain
Base notes: sandalwood, vanilla, ambergris, musk



WITH AN AMBERGRIS NOTE

PURE 64 100064

Type: tasteful and sensual
Fragrance notes:
Head notes: tangerine, cedar, anise
Heart notes: rosemary, olive tree flowers
Base notes: musk, guaiacum, tonka bean

PURE 458 100458

Type: oriental but refreshing
Fragrance notes:
Head notes: mint, coriander
Heart notes: black pepper, ambergris, vetiver
Base notes: oakmoss, patchouli, vanilla

WITH A SPICY NOTE

PURE 224 100224

Type: sweet, seductive
Fragrance notes:
Head notes: bergamot, grapefruit, grass
Heart notes: saffron, violet, nutmeg, jasmine
Base notes: sugar cane, vanilla, ambergris

PURE 459 100459

Type: extroverted, stunning
Fragrance notes:
Head notes: bergamot, grapefruit, elemi resin
Heart notes: pepper, cinnamon, saffron
Base notes: leather notes, vetiver, tobacco

PURE 466 100466

Type: sexy, intriguing, smoky
Fragrance notes:
Head notes: bergamot, basil, lavender, orange, lemon
Heart notes: apple blossom, heliotrope, water notes, watermelon, clove
Base notes: musk, cedarwood, tonka bean, sandalwood, guaiac wood

PURE 468 100468

Type: firm, mature, alluring
Fragrance notes:
Head notes: mandarin, cinnamon, pineapple
Heart notes: cedarwood, patchouli, tonka bean
Base notes: ambergris, musk, guaiac wood



WOODY classy and fashionable

Romantic, mysterious, warm and noble woody aromas boost your trust in your capabilities. Stand out with a resin, forest aroma. Compositions dedicated to the elegant man.

WITH A WATER NOTE

PURE 457 100457

Type: fresh, minimalist
Fragrance notes:
Head notes: grapefruit, tangerine, water notes
Heart notes: jasmine, bay leaf
Base notes: ambergris, patchouli, oakmoss

PURE 460 100460

Type: fresh, timeless, uninhibited
Fragrance notes:
Head notes: lemon, apple, basil, bergamot, clove
Heart notes: rose, pepper, jasmine, cardamom, nutmeg, lily of the valley
Base notes: cedarwood, musk, vanilla

PURE 462 100462

Type: half way between glamour and minimalism
Fragrance notes:
Head notes: mandarin, lemon, marine notes
Heart notes: orange blossom, cinnamon, oakmoss
Base notes: cashmere wood, patchouli, ambergris, musk

WITH A CITRUS NOTE

PURE 461 100461

Type: energetic, refreshing, dynamic
Fragrance notes:
Head notes: bergamot, mandarin, lime, ivy leaves, pink grapefruit
Heart notes: nutmeg, lavender, sage
Base notes: musk, cedarwood, sandalwood, patchouli

PURE 469 100469

Type: modern, energetic, metallic
Fragrance notes:
Head notes: bergamot, pineapple, blackcurrant leaf
Heart notes: water notes, cashmere wood, cardamom
Base notes: patchouli, sandalwood, musk

WITH A FRUITY NOTE

PURE 55 100055

Type: light and elegant
Fragrance notes:
Head notes: coriander, apple
Heart notes: incense, Sichuan pepper
Base notes: vanilla, woody notes



PURE

Man

PERFUME
fragrance: 20% | capacity: 50 ml



WATER

cool and inspiring

Inspired by a refreshing breeze, adventure holiday, summer rain. Simple, modern, joyful and casual. Excellent whenever you can afford more freedom.

WITH A GREEN NOTE

PURE 451
100451

Type: clear, energising
Fragrance notes:
Head notes: water notes, rosemary
Heart notes: cardamom, sequoia
Base notes: musk, patchouli

PURE 463
100463

Type: business, yet unconventional
Fragrance notes:
Head notes: bergamot, cardamom, yuzu
Heart notes: rosemary, sea water chord, geranium
Base notes: cedarwood, vetiver, oakmoss



PHEROMONE

PERFUME
fragrance: 20% | capacity: 50 ml



CITRUS

fresh and stimulating

Light, highly refreshing and energizing fragrances composed for the life-loving and young at heart man. They offer a sense of being well-rested and relaxed, and in addition give you an energy boost.

WITH A WATER NOTE

PURE 467
100467

Type: cheeky, light and elusive
Fragrance notes:
Head notes: bergamot, mandarin, peppermint
Heart notes: marine notes, ginger, cardamom, lavender
Base notes: labdanum, cedarwood, ambergris, musk

WITH A LEMON NOTE

PURE 57
100057

Type: full of sun, magnificent
Fragrance notes:
Head notes: plum, apple, bergamot
Heart notes: cinnamon, pink pepper
Base notes: vanilla, Jamaican rum

WITH AN ORANGE NOTE

PURE 93
100093

Type: modern, vibrant
Fragrance notes:
Head notes: pineapple, rosemary, bergamot
Heart notes: cyclamen, lavender, jasmine, ginger
Base notes: oakmoss, ivy

WITH A MANDARIN NOTE

PURE 134
100134

Type: refreshing, captivating
Fragrance notes:
Head notes: bitter orange, lemon, bergamot
Heart notes: rosemary, sea grass, violet
Base notes: patchouli, cedar, ambergris

PURE 452
100452

Type: very refreshing, twinkling
Fragrance notes:
Head notes: aldehyde, mint, citrus fruits, water notes
Heart notes: neroli, cedar, pepper, cypress
Base notes: tonka bean, vanilla, vetiver

Are you looking for that last touch for your dream date outfit?

GO FOR PHEROMONE!

Be remembered. With these perfumes you'll leave no one in doubt! Pheromones are odourless substances added to perfume to reinforce their stimulating effect. Pheromones are the secret weapon, with a mission to boost attractiveness and self-confidence. Seduction has never been so easy!



Woman

Man

FLIRT ◀

05 10 18 23 101
120005 120010 120018 120023 120101

SUCCESS ◀

33 81 98
120033 120081 120098

CHARM ◀

97 173
120097 120173

▶ **SEDUCTION**

52 110
120052 120110

▶ **SUCCESS**

64 134
120064 120134

▶ **SELF-CONFIDENCE**

43 56
120043 120056

INTENSE

PERFUME
Capacity: 50 ml

Are you looking for a super long-lasting fragrance?

GO INTENSE!

Enjoy your favourite fragrance for an unbelievably long time! Up to 30% fragrance!

Cologne (3-5%)

Eau de Toilette (up to 16%)

Eau de Parfum (16%)

Perfume (20%)

INTENSE (24-30%)



Woman | Fragrance: 30%

FLORAL

WITH A FRUITY NOTE

INTENSE 10

110010 | a fragrance that provokes

INTENSE 17

110017 | the power of seduction

INTENSE 25

110025 | charming composition

WITH AN ORIENTAL NOTE

INTENSE 97

110097 | always in style

WITH A GREEN NOTE

INTENSE 81

110081 | fresh and subtle

WITH AN ALDEHYDE NOTE

INTENSE 21

110021 | classic

CITRUS

WITH A LEMON NOTE

INTENSE 33

110033 | refreshing and energetic

WITH A MANDARIN NOTE

INTENSE 23

110023 | joyful & romantic

ORIENTAL

WITH A FLORAL NOTE

INTENSE 09

110009 | Discover the secret

WITH A FRUITY NOTE

INTENSE 98

110098 | business elegance

WITH A SPICY NOTE

INTENSE 173

110173 | exotic journey

CHYPRE

WITH A FRUITY NOTE

INTENSE 05

110005 | inflames the senses

WITH A WOODY NOTE

INTENSE 18

110018 | slight provocation

Man | Fragrance: 24%

CHYPRE

WITH A WOODY NOTE

INTENSE 56

110056 | definitely modern

WITH A NOTE OF AMBERGRIS AND MUSK

INTENSE 110

110110 | liberated, manly and brave

ORIENTAL

WITH A FLORAL NOTE

INTENSE 52

110052 | the definition of a twenty-first century man

WITH AN AMBERGRIS NOTE

INTENSE 64

110064 | the power of elegance

FOUGERE

WITH A FERN NOTE

INTENSE 43

110043 | antidote to boredom

CITRUS

WITH A MANDARIN NOTE

INTENSE 134

110134 | the essence of lightness



MINI CLASSICS

PERFUME
Fragrance: 20% | Capacity: 15 ml

Fragrances available only while stocks last!
You want to have your beloved scent always with you! Carrying the whole perfume bottle might be slightly uncomfortable. Mini versions are the perfect solution – they fit any purse!



ORIENTAL

WITH A FRUITY NOTE

FM 237*

Type: provocative, flirty
Fragrance notes:
Head notes: exotic fruits, blackcurrant
Heart notes: peony, jasmine, plum
Base notes: vanilla, musk, ambergris

FLORAL

WITH AN ORIENTAL NOTE

FM 239*

Type: vibrating, intense
Fragrance notes:
Head notes: cardamom, pink pepper, tangerine
Heart notes: iris, campanula, Ceylon tea
Base notes: cedar, vetiver, musk

WOODY

WITH A FLORAL NOTE

FM 241*

Type: seductive, comfortable, full of charm
Fragrance notes:
Head notes: bergamot
Heart notes: ylang-ylang, Casablanca lily, orange blossom
Base notes: sandalwood, amber resin, vanilla

FIND YOUR OWN STYLE!

EAU DE TOILETTE
Capacity: 30 ml

Eau de Toilette designed for girls and boys, who are just beginning their adventure with perfume. PLAY WITH FASHION!



Girls FLORAL

WITH A FRUITY NOTE

Sounds delicious, doesn't it?

FM 600

Type: joyful, girlish
Fragrance notes:
Head notes: cherry, tangerine, green notes
Heart notes: raspberry, jasmine, rose
Base notes: sandalwood, ambergris



Boys FOUGERE

WITH A LAVENDER NOTE

Excellent companion!

FM 601

Type: fresh, energising
Fragrance notes:
Head notes: lemon, juniper, cardamom
Heart notes: apple, lavender, geranium
Base notes: cedar, vanilla, tonka bean



LUXURY COLLECTION

Woman

The Luxury Collection is a wide selection of perfumes and perfumed waters in original bottles which emphasize their beauty.

CHYPRE sensual and tempting

WITH A FRUITY NOTE

FM 149

Type: joyful and sensual

Fragrance notes:

Head notes: white tea, basmati rice

Heart notes: cherry blossom,
frangipani, heliotrope

Base notes: musk, tanaka wood,
incense, vanilla



PERFUME

Fragrance: 20% | Capacity: 50 ml

FM 192

Type: captivating, sweet

Fragrance notes:

Head notes: pear, orange blossom

Heart notes: tiare, lily

Base notes: honey, patchouli



FM 362

Type: overwhelming, seductive

Fragrance notes:

Head notes: blackcurrant leaf

Heart notes: rose, freesia

Base notes: patchouli, vanilla,
ambroxan, woody notes



WITH AN ORIENTAL NOTE

FM 356

Type: exotic, sexy

Fragrance notes:

Top notes: violet, frangipani

Heart notes: jasmine, osmanthus

Base notes: patchouli, musk



Perfume 30 ml | Fragrance: 20%



WITH A WOODY NOTE

FM 357

Type: essential, heavily powdery

Fragrance notes:

Head notes: tangerine, pink pepper

Heart notes: rose, mimosa, orris,

patchouli

Base notes: vanilla, sandalwood,
tonka bean

Perfume 50 ml | Fragrance: 20%

ORIENTAL
strong and untamed



WITH A WOODY NOTE

FM 363

Type: mesmerising, exotic
Fragrance notes:
Head notes: saffron, cypriol, labdanum
Heart notes: agar (oud), Turkish rose, Bulgarian rose
Base notes: agar (oud), guaiacum, patchouli

FM 364

Type: bold, intriguing
Fragrance notes:
Head notes: orange blossom, cardamom
Heart notes: agar (oud), rose, leather notes
Base notes: saffron, vanilla, woody notes



EAU DE PARFUM
Fragrance: 16% | Capacity: 100 ml



FM 142

Type: provocative, addictive
Fragrance notes:
Head notes: blackberry, mandarin leaves
Heart notes: rose, tuberose, orange blossom
Base notes: sandal wood, tonka bean, vanilla

Perfume 50 ml | Fragrance: 20%



FM 162

Type: classical, slightly sweet
Fragrance notes:
Head notes: floral honey
Heart notes: rose, vanilla
Base notes: musk, patchouli

Perfume 50 ml | Fragrance: 20%



FM 359

Type: magnetic, intense
Fragrance notes:
Head notes: jasmine, heliotrope
Heart notes: iris root, cashmere wood
Base notes: ambergris, vanilla

Perfume 50 ml | Fragrance: 20%

WITH A SPICY NOTE

FM 366

Type: rebellious, urban, sexy, edgy
Fragrance notes:
Head notes: pink pepper, orange blossom, pear
Heart notes: coffee, jasmine
Base notes: vanilla, patchouli, cedar

Perfume 50 ml | Fragrance: 20%



WITH A FRUITY NOTE

FM 286

Type: sexy, sophisticated
Fragrance notes:
Head notes: bergamot
Heart notes: rose, patchouli
Base notes: ambergris, orange

Perfume 50 ml | Fragrance: 20%



CITRUS
joyful and energetic

WITH A MANDARIN NOTE

FM 296

Type: sophisticated, classic
Fragrance notes:
Head notes: opuntia, green tangerine, pear, bergamot
Heart notes: lily, jasmine, cardamom, narcissus
Base notes: olive tree, sandalwood, cedar

Perfume 50 ml | Fragrance: 20%



WOODY
sophisticated and classy



WITH A FRUITY NOTE

FM 319

Type: bold, ambiguous
Fragrance notes:
Head notes: citrus fruits, green notes
Heart notes: fig, caviar
Base notes: fig wood, musk

Perfume 30 ml | Fragrance: 20%



FM 358

Type: ultra-feminine, delightful
Fragrance notes:
Head notes: bergamot, blackcurrant
Heart notes: jasmine, lily of the valley
Base notes: cedar, sandal wood, tonka bean, vanilla

Perfume 50 ml | Fragrance: 20%



WITH A FLORAL NOTE

FM 287

Type: alluring, mysterious
Fragrance notes:
Head notes: gardenia, green notes
Heart notes: jasmine, almond
Base notes: Chinese liquorice, ambergris, musk, vanilla

Perfume 50 ml | Fragrance: 20%



FM 313

Type: chic, compelling
Fragrance notes:
Head notes: lemon, raspberry
Heart notes: orange blossom, jasmine
Base notes: patchouli, white honey

Perfume 50 ml | Fragrance: 20%



FLORAL
super feminine



WITH A CITRUS NOTE

FM 298

Type: full of energy, fresh
Fragrance notes:
Head notes: citrus fruits, peony
Heart notes: rose, osmanthus
Base notes: patchouli, sandalwood

Perfume 50 ml | Fragrance: 20%



FM 360

Type: delicate, charming
Fragrance notes:
Head notes: lime, grapefruit blossom
Heart notes: freesia, honeysuckle, white flowers
Base notes: ambergris, birch

Perfume 50 ml | Fragrance: 20%



FM 283

Type: provocative, sweet
Fragrance notes:
Head notes: nectarine, blackcurrant, peach
Heart notes: orange blossom, wild orchid
Base notes: musk, amber

Eau de parfum 100 ml

Fragrance: 16%



FLORAL
super feminine



WITH A WOODY NOTE

FM 320

Type: romantic, a bit mysterious

Fragrance notes:

Head notes: blackberries, cranberries
Heart notes: violet, Damascus rose, peony
Base notes: patchouli, sandalwood

Eau de parfum 100 ml

Fragrance: 16%



FM 351

Type: multi-dimensional, sensual

Fragrance notes:

Head notes: peach, freesia, green absinthe
Heart notes: rose, iris
Base notes: sandalwood, musk, ambergris

Perfume 50 ml | Fragrance: 20%



FM 365

Type: classic with a note of Baroque splendour

Fragrance notes:

Head notes: grapefruit, bergamot
Heart notes: rose, daffodil, jasmine, geranium, patchouli
Base notes: sandalwood, vanilla, white musk, tonka bean

Perfume 50 ml | Fragrance: 20%



WITH A FRUITY NOTE

FM 321

Type: subtle, alluring

Fragrance notes:

Head notes: nectarine, pear, peach
Heart notes: jasmine, rose
Base notes: musk, cedar

Eau de parfum 100 ml

Fragrance: 16%



FM 281

Type: vibrant, hot

Fragrance notes:

Head notes: blackcurrant
Heart notes: jasmine, rose
Base notes: musk, strawberry

Perfume 30 ml | Fragrance: 20%



FM 291

Type: charming, juicy

Fragrance notes:

Head notes: raspberry, lychee
Heart notes: freesia, rose
Base notes: patchouli, vanilla

Perfume 50 ml | Fragrance: 20%



FM 292

Type: exotic, refreshing

Fragrance notes:

Head notes: lychee, plum, strawberry, pear
Heart notes: violet, jasmine
Base notes: ambergris, vanilla, teakwood

Perfume 50 ml | Fragrance: 20%



WITH A WATER NOTE

FM 141

Type: crystal clear, romantic

Fragrance notes:

Head notes: yuzu, pomegranate, ice chord
Heart notes: lotus, magnolia, peony
Base notes: ambergris, musk, mahogany



PERFUME

Fragrance: 20% | Capacity: 50 ml

FM 361

Type: optimistic, radiant

Fragrance notes:

Head notes: water notes, grapefruit, lemon
Heart notes: gardenia, green peas, white flowers
Base notes: musk, woody notes



FM 322

Type: serene, sensual

Fragrance notes:

Head notes: quince, grapefruit
Heart notes: jasmine, hyacinth
Base notes: white musk, cedar

EAU DE PARFUM

Fragrance: 16% | Capacity: 100 ml

FM 323

Type: sweet, feminine

Fragrance notes:

Head notes: apple, watermelon, lychee
Heart notes: magnolia, rose
Base notes: white musk, cedar



FM 367

Type: stylish, sophisticated, upscale

Fragrance notes:

Head notes: bergamot, mango, neroli, mandarin, grapefruit
Heart notes: violet, orange blossom
Base notes: ambergris, musk, cedar, sandalwood

Perfume 50 ml | Fragrance: 20%



FLORAL
super feminine

WITH AN ORIENTAL NOTE

FM 297

Type: sexy, full of passion
 Fragrance notes:
 Head notes: fresh, sweet apple
 Heart notes: orange blossom,
 white roses
 Base notes: sandalwood, crème brûlée,
 vanilla

Perfume 50 ml | Fragrance: 20%



FM 352

Type: velvety, thrilling
 Fragrance notes:
 Head notes: orange blossom
 Heart notes: jasmine
 Base notes: patchouli, honey

Perfume 50 ml | Fragrance: 20%



FM 353

Type: intoxicatingly sweet,
 appetising
 Fragrance notes:
 Head notes: bergamot
 Heart notes: orange blossom, jasmine,
 Bulgarian rose
 Base notes: vanilla, caramelised sugar

Perfume 50 ml | Fragrance: 20%



PERFUME

Fragrance: 20% | Capacity: 50 ml

FM 146

Type: imbued with sweetness,
 mysterious

Fragrance notes:
 Head notes: freesia, apple,
 Jamaican pepper
 Heart notes: violet, hibiscus, rose, lilac
 Base notes: labdanum, sandalwood,
 cedar, suede

FM 147

Type: tasteful, alluring

Fragrance notes:
 Head notes: lychee, tangerine, peach
 Heart notes: plum, lily of the valley, lily
 Base notes: vanilla, ambergris, musk



FM 317

Type: seductive, sensual
 Fragrance notes:
 Head notes: red berries, pink pepper
 Heart notes: raspberry, peach, violet,
 lilac
 Base notes: patchouli, ambergris

Perfume 50 ml | Fragrance: 20%



FM 318

Type: light, energising
 Fragrance notes:
 Head notes: mint, lemon
 Heart notes: red pepper, peony, jasmine
 Base notes: cedar, labdanum, sugar

Perfume 50 ml | Fragrance: 20%



FM 354

Type: peaceful, relaxing
 Fragrance notes:
 Head notes: rose, Alpine violet,
 cotton flower
 Heart notes: fabric aroma
 Base notes: iris, musk

Perfume 50 ml | Fragrance: 20%



FM 355

Type: sensual, seductive
 Fragrance notes:
 Head notes: citrus notes
 Heart notes: jasmine tea, lily
 Base notes: sandalwood, cedar, vanilla

Perfume 50 ml | Fragrance: 20%

LUXURY COLLECTION

Man

CHYPRE
sensual and tempting



WITH A FRUITY NOTE

FM 169

Type: relaxing, spicy

Fragrance notes:

Head notes: Sicilian tangerine
Heart notes: rosemary, rosewood,
Sichuan pepper
Base notes: incense, oakmoss

Eau de parfum 100 ml

Fragrance: 16%



WOODY
sophisticated and classy



WITH A FRUITY NOTE

FM 195

Type: noble, classic

Fragrance notes:

Head notes: coriander, basil
Heart notes: cardamom
Base notes: cedar, ambergris, tobacco

Eau de parfum 100 ml

Fragrance: 16%



FM 333

Type: cool, dynamic

Fragrance notes:

Head notes: tangerine, grapefruit,
bergamot
Heart notes: galbanum, violet, nutmeg
Base notes: vetiver, patchouli, cedar

Eau de parfum 100 ml

Fragrance: 16%



WITH A VETIVER NOTE

FM 151

Type: sophisticated, impressive

Fragrance notes:

Head notes: lemon, bergamot, ginger
Heart notes: cedar, amber
Base notes: geranium, musk

FM 152

Type: elegant, harmonious

Fragrance notes:

Head notes: bergamot
Heart notes: pepper, incense,
leather, tobacco
Base notes: cedar



FM 329

Type: sensual and modern

Fragrance notes:

Head notes: black pepper, bergamot
Heart notes: lavender, coriander
Base notes: vetiver



EAU DE PARFUM

Fragrance: 16% | Capacity: 100 ml



WOODY
sophisticated and classy



WITH A PATCHOULI NOTE

FM 331

Type: bold, full of energy

Fragrance notes:

Head notes: pear, orange

Heart notes: nutmeg

Base notes: patchouli, leather



FM 198

Type: flamboyant, expressive

Fragrance notes:

Head notes: bergamot

Heart notes: black pepper, tobacco

Base notes: patchouli, cypress

Perfume 50 ml | Fragrance: 20%

EAU DE PARFUM

Fragrance: 16% | Capacity: 100 ml



FM 327

Type: untamed, powerful

Fragrance notes:

Head notes: grapefruit, pink pepper

Heart notes: nutmeg, ginger, jasmine

Base notes: vetiver, patchouli, labdanum



FM 334

Type: refreshing, with a hint of spice

Fragrance notes:

Head notes: grapefruit, orange

Heart notes: geranium leaves, black pepper, pink pepper

Base notes: cedar, vetiver, patchouli



FM 160

Type: mild, surprising

Fragrance notes:

Head notes: tomato leaves, water flowers, blackcurrant

Heart notes: black pepper, rose

Base notes: patchouli

FOUGERE
seductively masculine



WITH A LAVENDER NOTE

FM 300

Type: light, dynamic

Fragrance notes:

Head notes: bergamot, lemon, grapefruit

Heart notes: ginger, lavender

Base notes: Atlas cedar

Perfume 50 ml | Fragrance: 20%

WITH A FERN NOTE

FM 332

Type: light, full of energy

Fragrance notes:

Head notes: green apple, mint, tangerine

Heart notes: ginger, sage, fern

Base notes: oakmoss, musk, sandalwood

Eau de parfum 100 ml

Fragrance: 16%



ORIENTAL
strong and untamed



WITH A FLORAL NOTE

FM 302

Type: classic, very masculine

Fragrance notes:

Head notes: bergamot, coriander, cardamom

Heart notes: cedar, ambergris

Base notes: rose, jasmine, freesia

Eau de parfum 100 ml

Fragrance: 16%



WITH A SPICY NOTE

FM 199

Type: rich, multi-threaded

Fragrance notes:

Head notes: Italian tangerine, peppermint

Heart notes: cinnamon, Turkish rose, cardamom

Base notes: leather notes

Eau de parfum 100 ml

Fragrance: 16%



FM 336

Type: refined, stands out in the crowd

Fragrance notes:

Head notes: bergamot, orange blossom, lavender, anise

Heart notes: nutmeg, water lily, plum, cinnamon, juniper berries

Base notes: labdanum, patchouli, leather, amber resin

Eau de parfum 100 ml

Fragrance: 16%



FM 328

Type: slick, full of charm

Fragrance notes:

Head notes: pepper

Heart notes: lavender, cardamom, fennel

Base notes: patchouli, vanilla

Eau de parfum 100 ml

Fragrance: 16%



WITH A WOODY NOTE

FM 335

Type: distinct, modern

Fragrance notes:

Head notes: rosewood, cardamom, pepper

Heart notes: vetiver, agar (oud)

Base notes: vanilla, ambergris

Eau de parfum 100 ml

Fragrance: 16%



WITH A FRUITY NOTE

FM 325

Type: modern, energising

Fragrance notes:

Top notes: tangerine

Heart notes: neroli, cardamom

Base notes: patchouli, cedar, absinthe

Eau de parfum 100 ml

Fragrance: 16%



FM 301

Type: energetic, powerful

Fragrance notes:

Head notes: tangerine, lemon

Heart notes: cedar, coriander

Base notes: ambergris, labdanum

Eau de parfum 100 ml

Fragrance: 16%



FM 326

Type: seductive, sensual

Fragrance notes:

Head notes: birch leaves

Heart notes: cardamom, African violet

Base notes: wood notes, musk

Eau de parfum 100 ml

Fragrance: 16%





FEDERICO MAHORA

SKIN CARE FOR YOU

Discover cosmetics that are the best for you. The rich portfolio of our brand offers excellent body and face care cosmetic series. Provide vitality to your skin, make it firm and radiant again. Stop the time and make your skin look healthy and beautiful. Give it what it needs most!

FEDERICO MAHORA

Daily care of the face and body can be simple and fun! Haste, numerous travels – multipurpose cosmetics are what everyone's looking for in the world of cosmetics today. That's what our new Cream is – designed for the whole family and for every skin type.

COMPLETE CARE CREAM

COMPLETE CARE CREAM

Comprehensive care for the whole family. With its light, delicate formula it is also suitable for sensitive skin and children from 3 years of age. Leaves a delicate protective film. With ingredients that optimally hydrate and smooth the skin of the face, body and hands.

- ▶ contains coconut and avocado oils which strengthen the skin's protective barrier
- ▶ with panthenol and allantoin, which soothe and have anti-inflammatory properties
- ▶ complex of vitamins C and E, which slow down the ageing processes

30 ml | 501001



SMALL CREAM, BIG PLEASURE

This cosmetic product should be always with you. It is perfect for travel as it's so small that it will fit even into a tiny bag!



β-GLUCAN ACTIVE

β-Glucan Active is a range of skin care products which are based on an innovative and natural ingredient – oat beta-glucan that has recently been discovered by scientists. These universal cosmetics are recommended for both women and men, regardless of their age. Their effects are marvellous!



3 IN 1 FACIAL CLEANSER

3 IN 1 FACIAL CLEANSER

Exceptionally light hypoallergenic formula with light texture. It perfectly removes make-up, also waterproof, effectively removes dirt, and tones the skin leaving your face smooth and nourished.

► **the power of ingredients:** oat beta-glucan, panthenol, sweet almond oil, vitamin e, witch hazel hydrolate, centifolia rose extract

► **does not require rinsing**

► **tested under supervision of ophthalmologist**

200 ml | **ED1**

FACE SERUM

FACE SERUM

Innovative, intensely acting cosmetic for every skin type, especially recommended for skin with broken capillaries, with acne, for sensitive, tired and over-dried skin. Recommended for regular use instead of a cream, especially in the morning and evening, as well as topically on areas of the face and body that require special treatment.

► **allergen-free**

30 ml | **SR1**



30 ml

MOISTURISING FACE CREAM | KN1

MOISTURISING FACE CREAM

Deeply moisturises the skin which recovers vitality and a healthy look day by day. Oat beta-glucan restores collagen synthesis, sodium lactate, glycerine and hyaluronic acid prevent the skin from drying, higher fatty acid esters restore protective lipid layer of the skin.

issue: dry and dehydrated skin

SEMI-RICH FACE CREAM | KP1

SEMI-RICH FACE CREAM

Contains nourishing and regenerating, as well as gently oiling ingredients. Beta-glucan actively rebuilds the skin and makes it elastic. Esters of higher fatty acids help maintain the right level of moisture, whereas, coconut oil and shea butter restore firmness.

issue: skin which lacks elasticity or combination skin

RICH FACE CREAM | KT1

RICH FACE CREAM

Perfectly selected nourishing ingredients oil the skin and create a protective layer preventing from drying and the activity of external factors.

issue: over-dried and irritated

EFFECTIVENESS OF β-GLUCAN WAS CONFIRMED BY NUMEROUS STUDIES:

- provides the skin with optimum moisture creating a thin layer protecting against water loss
- stimulates collagen production and so it has rejuvenating and anti-ageing properties giving a long-lasting effect of minor wrinkles and lines reduction
- regenerates dry skin, soothes irritations, facilitates the healing processes
- tightens and makes the skin more elastic, firmer and smoother
- it is a natural factor protecting against UV radiation



MOISTURISING & SMOOTHING HAND CREAM | KR3

MOISTURISING & SMOOTHING HAND CREAM

Provides and soothes the skin of hands for a long time making it velvety smooth to the touch. If used regularly, it improves the skin tone and strengthens matte brittle nails.

REGENERATING & NOURISHING HAND CREAM | KR2

REGENERATING & NOURISHING HAND CREAM

Created to answer the needs of over-dried, very dry skin of hands exposed to harmful external factors. Intensely nourishes, smooths the skin of hands and improves the condition of giving them a healthy and well-groomed look.

► **formula based on:** beta-glucan, rice oil, castor oil, allantoin

50 ml



MOISTURISING BODY BALM

MOISTURISING BODY BALM

Moisturises and nourishes the skin giving it firmness and elasticity. For the care of every skin type.

300 ml | **BN1**

ANTICELLULITE BODY BALM

ANTICELLULITE BODY BALM

Contains unique Anticellulite Forte complex that shapes the body and strengthens tissues. If regularly used, it gradually reduces the effect of "orange peel" and visibly shapes thighs, hips, buttocks and abdomen areas.

300 ml | **CEL1**



GOLD REGENESIS

An exclusive line of Gold Regensis cosmetics has been created for the skin of the 40+. It was specially designed to successfully combat all visible signs of ageing. The rich formula is packed with the unique active ingredient – bioavailable colloidal gold.

ANTI-AGEING GEL TONER

ANTI-AGEING GEL TONER

A luxurious cosmetic with a mild alcohol-free formula which restores the right pH value and activates the skin's protective functions.

▶ with rose water, which soothes and restores a youthful radiance of the skin

150 ml | OT1



ANTI-AGEING EYE CREAM

ANTI-AGEING EYE CREAM

Restores firmness and smoothness to the delicate skin around the eyes. It fights signs of ageing and discolouration.

▶ tested under the supervision of ophthalmologists

20 ml | KO3

ANTI-AGEING DAY CREAM | KD1

ANTI-AGEING DAY CREAM

Visibly reduces wrinkles, restores the skin's elasticity and provides it with optimum moisturisation.



ANTI-AGEING NIGHT CREAM | KN2

ANTI-AGEING NIGHT CREAM

Nourishes, moisturises and intensely regenerates the skin whilst reducing wrinkles and modelling the shape of your face while you sleep.

50 ml

COLLOIDAL GOLD

– an ally in the fight against passing time:

- stimulates collagen and elastin synthesis, contributes to tissue reconstruction and restores natural skin tightness
- stimulates microelement exchange in the skin, contributing to its intensive nourishment
- restores the natural glow and vitality of the skin
- eliminates discolouration and activates natural immune system
- eliminates existing wrinkles and prevents formation of new ones

TRIUMPH OF ORCHIDS

Orchids, delicate flowers symbolising grace, charm, perfection and luxury, became the inspiration for our unique collection – Triumph of Orchids. Rich formulas of these cosmetics were based on orchid extract and have a subtle floral scent.

ORCHID EXTRACT is one of the most valuable cosmetic ingredients as it is known for its anti-ageing, softening and moisturising properties.

Face Care

REVITALISING SERUM

REVITALISING SERUM

Its delicate texture instantly absorbs into the skin leaving the skin firm, tight and elastic. Contains orchid extract well-known for its moisturising properties, mother of pearl that improves the skin tone, and elastin that smooths minor wrinkles. Wrinkles become less visible, and your face gains radiance.

▶ with ceramide complex actively strengthens the lipid barrier of the epidermis

30 ml | OP4



MOISTURISING FACE WASH

MOISTURISING FACE WASH

For everyday care of normal, combination, oily and sensitive skin. A rich formula based on lactic acid which stimulates tissue regeneration and plant glycerine, which provides the skin with intense moisturisation.

▶ with mother of pearl which makes your skin glow

150 ml | OP1



Body Care

VITAMIN BODY MIST*

VITAMIN BODY MIST

Moisturises, nourishes and improves the condition of the skin while enveloping with a floral scent. Light non-greasy formula allows for multiple applications throughout the day.

▶ vitamin bomb: A + E + F

75 ml | OA3



SATIN BODY & HAIR OIL*

SATIN BODY & HAIR OIL

Designed for comprehensive care of the skin and hair – it protects from over-drying. It has a light texture that does not weigh hair down, and, when sprayed on the skin, it absorbs instantly giving it a silky smoothness and softness.

▶ with argan oil, which intensely nourishes the skin and hair

75 ml | OA1



ALOE VERA

Polluted environment, adverse external factors and poor diet – your skin has to protect itself. First aid relief is brought by valuable aloe.



FACIAL CLEANSING FOAM

FACIAL CLEANSING FOAM

Gentle but effective and rich in moisturising ingredients – ideal for everyday care! Removes make-up and dirt, leaving your skin feeling refreshed, soothed and perfectly moisturised.

► **hypoallergenic formula!**

150 ml | **AV1**



PEEL-OFF FACIAL MASK

PEEL-OFF FACIAL MASK

Gently exfoliates dead skin, perfectly cleanses and tightens pores. It prevents the skin from shining and provides softness, elasticity and the feeling of pleasant refreshment.

► **with soothing jasmine extract and *Enantia chlorantha* tree bark extract that regulates sebum secretion**

► **for normal, combination and oily skin**

50 ml | **AV2**



FACIAL TONER

FACIAL TONER

Restores the right pH value of the skin and provides the proper level of moisture. In the form of a delicate mist.

► **alcohol-free and hypoallergenic**

150 ml | **AV3**



FACIAL GEL-CREAM

FACIAL GEL-CREAM

Exceptionally light and fast absorbing. Intensely moisturises, nourishes and soothes the skin. Provides a velvety softness and a fresh healthy look. Perfect for under make-up.

► **with natural UV filters**

► **hypoallergenic formula**

50 ml | **AV4**



INTIMATE HYGIENE WASH

INTIMATE HYGIENE WASH

Gently cleanses and provides a sense of purity and freshness. Strengthens the natural protective barrier and restores its proper pH. Soothes irritations, moisturizes and reduces the risk of infection.

200 ml | **AV5**

The Aloe Vera Collection provides complex care through cosmetics for all skin types, also sensitive and those requiring special treatment.



ALOE is a treasure:

- soothes irritations
- moisturizes and softens
- reduces redness
- supports tissue regeneration
- fights free radicals
- improves elasticity

HELLO HONEY

Derived from nature, we took what's best in honey – the very extract – and combined it with nourishing ingredients to let you enjoy its sweet care every single day.

Beneficial properties of the Hello Honey series come from honey's wealth of simple sugars, minerals, vitamins, enzymes and organic acids.



▲ BATH POWDER

BATH POWDER

Derive joy from bath time! Enjoy the gentle washing foam, sensual scent and velvety soft skin.

- ▶ with amber extract, which effectively neutralises free radicals helping the skin maintain a youthful appearance for longer
- ▶ with honey and goat milk extract which provide perfect moisturisation

200 g | **HH1**

▲ NECTAR BODY WASH

NECTAR BODY WASH

Soft and fragrant skin thanks to a gentle fluid with a delicate, oily consistency. The Nectar cleanses and nourishes the skin. Use both in the bath and the shower.

- ▶ with honey extract, lactic acid and allantoin which perfectly moisturize the body
- ▶ with Nigella plant extract, which has antioxidant properties

220 ml | **HH3**

▲ SUGAR BODY SCRUB

SUGAR BODY SCRUB

Sugar Body Scrub thoroughly cleanses, smooths and intensely oils the skin. Restores softness and firmness of your skin. Use twice a week.

- ▶ with argan oil, which protects the skin from drying, improves elasticity and delays the ageing processes
- ▶ with sweet almond oil, which is rich in vitamins E, PP, group B, magnesium, potassium and zinc and has strengthening properties

150 g | **HH2**

▲ BODY PUDDING

BODY PUDDING

Long-lasting and intense moisturisation as well as satin-like softness. Wonderfully fragrant butter with exceptionally fluffy texture. It spreads pleasantly and absorbs quickly.

- ▶ with sweet almond oil and honey extract, which provide perfect moisturisation
- ▶ with shea butter, which nourishes the skin

130 g | **HH4**

BODY SIGN

Cosmetics whose formulas are based on natural ingredients and are a real treat for the senses. They are available in two fragrance versions: juicy cherries in chocolate and blackcurrant with sweet cream.



NATURAL SOAP* | 140 g
NATURAL SOAP

Handmade from high-quality natural ingredients. Seduces with a fascinating scent and original look. 98% of its ingredients are of natural origin.

BS02 | cherry & chocolate



NATURAL LIP BALM* | 15 g
NATURAL LIP BALM

Delight for the lips! Tempting softness that comes from the combination of three natural oils: coconut, rice, sweet almonds.

BS05 | cherry & chocolate
BS25 | cream & blackcurrant



NATURAL WARM BODY BUTTER* | 65 g
NATURAL WARM BODY BUTTER

The candle flame melts this cosmetic into warm aromatic massage oil. Light the wick and wait until the butter starts to melt. Make sure that the temperature is not too high before applying it. Use to massage the body, hands and feet.

- ▶ with coconut oil and almond oil, which regenerates and intensively moisturise the skin while reducing water loss
- ▶ with natural beeswax which rebuilds the lipid layer of the epidermis making the skin smooth, elastic and pleasant to the touch
- ▶ with nourishing shea butter which intensely moisturises and soothes the skin

BS01 | cherry & chocolate
BS21 | cream & blackcurrant



NATURAL BODY MOUSSE* | 180 ml
NATURAL BODY MOUSSE

Velvety mousse holds the power of nourishing oils and shea butter, rich in vitamins, minerals and fatty acids that penetrate into the skin, making it softer and more elastic.

BS24 | cream & blackcurrant



NATURAL SUGAR BODY SCRUB* | 180 ml
NATURAL SUGAR BODY SCRUB

Sugar cane crystals thoroughly cleanse the skin, whereas pieces of dried cherries gently massage the body and stimulate microcirculation.

- ▶ with high-quality natural ingredients which moisturise and nourish the skin and as a result make it firm and flexible

BS23 | cream & blackcurrant

SPA SENSES

The essence of a SPA hidden in beautiful packaging. Spa Senses is a collection of cosmetics for both women and men



BATH SALT* | 600 g
BATH SALT

Natural sea salt from the coast of Brazil, rich in calcium, magnesium, bromine, iodine, potassium and iron, strengthens the skin and makes it more elastic. Wonderful relaxation in a fragrant bath.

- 01S | verbena**
- 02S | peach**
- 03S | cherry blossom**
- 04S | vanilla**



BODY BUTTER* | 250 ml
BODY BUTTER

Created with a view to relaxing beauty treatments in the comfort of your own bathroom. It has a sensually creamy texture. It contains nourishing shea butter, cocoa butter, macadamia nut oil and linseed oil.

- SM02 | peach**
- SM04 | vanilla**



PERFUMED COSMETICS

For her

Perfumed Cosmetics is a luxurious series of care cosmetics for women, with fragrances which act harmoniously with the most popular Federico Mahora perfumes.



◀ **PERFUMED ANTIPERSPIRANT ROLL-ON** | 50 ml
PERFUMED ANTIPERSPIRANT ROLL-ON
Thanks to a combination of antiperspirant properties and fragrance composition, it ensures the sense of comfort and freshness. Excellent for active and energetic women.
AVAILABLE FRAGRANCES: **05T*, 18T, 23T*, 33T, 81T, 97T, 173T**



◀ **FRAGRANCE-FREE ANTIPERSPIRANT ROLL-ON**
FRAGRANCE-FREE ANTIPERSPIRANT ROLL-ON
Non-perfumed universal roll-on can be combined with any perfume scent. Provides long-lasting protection against unpleasant odour.
50 ml | **00T**



◀ **HAIR FRAGRANCE** | 50 ml
HAIR FRAGRANCE
Lets you release the sensual scent of perfume with every move you make. In the form of a convenient spray that you can carry in your purse.
▶ with specially selected polymers which gently fix the hairstyle and provide shine
▶ with ceramides which repair and smooth hair
AVAILABLE FRAGRANCES: **18W, 33W, 81W, 173W**



◀ **PERFUMED BODY BALM** | 200 ml
PERFUMED BODY BALM
Envelops the skin with a mist of the most beautiful perfume. It contains moisturising and active regenerating ingredients.
▶ with vitamin E, B5 and allantoin
AVAILABLE FRAGRANCES: **05M*, 10M*, 33M, 81M, 173M**
AVAILABLE BALM SAMPLES: **33M*, 81M***



◀ **PERFUMED SHOWER GEL** | 200 ml
PERFUMED SHOWER GEL
Pampers the senses with silky texture. Gently cleanses the body leaving on it a mist of favourite perfumes
AVAILABLE FRAGRANCES: **10E*, 18E, 23E*, 25E*, 33E, 81E, 97E, 173E**

For him

By using cosmetics with the same fragrance notes you can make your favourite scent more durable, and selected compositions create a harmonious body care ritual. When choosing your perfect perfume, think about selecting body care cosmetics with the same fragrance note.



▲ **PERFUMED HAND CREAM** | 100 ml
PERFUMED HAND CREAM
Rich in vitamins A and B5 and ingredients with strong moisturising and protective properties.
AVAILABLE FRAGRANCES: **52N*, 134N***



▲ **PERFUMED SHOWER GEL** | 200 ml
PERFUMED SHOWER GEL
Thoroughly cleanses the body leaving it smelling of the most beautiful perfumes. Contains panthenol with moisturising and regenerating properties.
AVAILABLE FRAGRANCES: **52E, 134E, 199E**



▲ **PERFUMED ANTIPERSPIRANT ROLL-ON** | 50 ml
PERFUMED ANTIPERSPIRANT ROLL-ON
Unique formula eliminates the effects of excessive sweating, and fragrance compositions perfectly harmonise with the perfume. Provides the feeling of comfort and freshness.
AVAILABLE FRAGRANCES: **52T, 56T*, 110T*, 134T, 199T**

REFRESHING COLLECTION



AFTER SHAVE BALM

AFTER SHAVE BALM

Contains ingredients that soothe and moisturise the skin on your face which is irritated after shaving, and gets easily absorbed, providing the feeling of comfort throughout the day.

- ▶ with nourishing macadamia oil
- ▶ with regenerating panthenol

AVAILABLE FRAGRANCES: **B052, B134, B199**

50 ml



SHAVING FOAM

SHAVING FOAM

Effectively softens facial hair and enables perfect shaving, giving the feeling of smoothness, freshness and well-groomed skin of the face.

- ▶ with allantoin which soothes irritation
- ▶ with aloe leaf extract that has moisturising and regenerating properties

AVAILABLE FRAGRANCES: **P052**

250 ml



AFTER SHAVE

AFTER SHAVE

Intensely fragrant after shave that is a great finish to a perfect shave. Cooling menthol brings a pleasant refreshment and allantoin soothes irritated skin.

- ▶ with allantoin which soothes skin and eliminates the tight skin sensation

AVAILABLE FRAGRANCES: **S043, S052, S056, S064, S110, S134, S199**

100 ml



HAIR CARE

Hair can be your true pride. To make it healthy, strong and beautifully shiny we created a series of shampoos and conditioners tailored to the various needs and types of hair.



ANTI-DANDRUFF SHAMPOO

ANTI-DANDRUFF SHAMPOO

With Dead Sea minerals. Has anti-dandruff properties and restores healthy look leaving hair shiny and soft.

▶ restores natural balance of the scalp

200 ml | W06



MEN'S SHAMPOO

MEN'S SHAMPOO

With algae extract and scalp conditioning ingredients that limit the effect of oily hair and also prevent dandruff.

▶ for everyday use
▶ cedar-spicy fragrance

200 ml | W08



DRY AND DAMAGED HAIR SHAMPOO

DRY AND DAMAGED HAIR SHAMPOO

Designed for dry, brittle, damaged by dying, drying and stretching hair.

▶ with an extract of red algae and panthenol
▶ result: regenerated and healthy looking hair

▶ use along with the conditioner

200 ml | W09



DRY AND DAMAGED HAIR CONDITIONER

DRY AND DAMAGED HAIR CONDITIONER

With algae extract, aloe vera juice, wheat proteins and ceramides A2.

▶ requires rinsing

150 ml | W11



FINE AND FLAT HAIR SHAMPOO

FINE AND FLAT HAIR SHAMPOO

Carefully selected ingredients make hair more fluffy, add volume, facilitate wet hair brushing, reduce frizzing and brilliantly moisturise hair.

▶ with algae extract and aloe juice, which moisturise and provide unique softness

▶ result: increased volume and hair easy to style.

▶ use along with the conditioner

200 ml | W10

FOOT CARE

Effective and proven – these are our foot care cosmetics. They provide comfort and convenience with every step you take.



SCRUB FOOT CREAM

SCRUB FOOT CREAM

Bits of natural pumice and olive pit husks exfoliate the epidermis and smooth the skin. Nourishing sunflower oil and cucumber extract give the skin pleasant softness, and pro-vitamin B5 stimulates cell renewal restoring healthy look.

▶ with the scent of lychee and mango

75 ml | S007



SOOTHING & REFRESHING FOOT GEL

SOOTHING & REFRESHING FOOT GEL

Contains arnica extract that strengthens blood vessels and improves micro-circulation, reducing swelling and providing the feeling of lightness. Natural herbal complex with white willow and manuka has antibacterial properties and reduces sweating.

▶ with cooling menthol

75 ml | S008



DEEP MOISTURISING FOOT CREAM

DEEP MOISTURISING FOOT CREAM

Intensely moisturises tired and coarse skin of the feet, perfectly nourishes, regenerates and smooths. Wheat germ oil gives the skin healthy look, strengthens it and gently oils it, and glycerine and urea restore softness and elasticity.

▶ with a pleasant tea-lemon scent

75 ml | S010



ANTIPERSPIRANT FOOT SPRAY

ANTIPERSPIRANT FOOT SPRAY

Created on the basis of selected active ingredients for the everyday comfort of your feet. Horse chestnut extract, that has blood vessels tightening properties, gives the feeling of soothing and calming.

▶ with sage extract, known for its antibacterial properties, reduces feet sweating and provides the feeling of freshness

150 ml | S009

AQUA MAGIC

Aqua Magic is a collection created for the youngest ones. It's suitable for children over 3 years of age. With these delicate cosmetics, each bath becomes an unforgettable adventure!



SHAMPOO & BODY WASH 2 IN 1

SHAMPOO & BODY WASH 2 IN 1

Wash the body and hair with one gentle cosmetic. A special hypoallergenic formula designed with kids in mind. A wonderful smell of tropical fruits.

▶ does not sting the eyes
▶ with provitamin B5 and marigold extract

200 ml | D002

BODY WASH FOAM*

BODY WASH FOAM

Gentle washing foam can be used even several times a day. Enriched with nourishing sweet almond oil, chamomile extract and allantoin, it is hypoallergenic and smells lovely of cranberries. Kids just love it!

200 ml | D005

HAIR SHINE DETANGLING SPRAY

HAIR SHINE DETANGLING SPRAY

Just spray your wet or dry hair and simply comb it! No rinsing or static effect. With the Spray the hair strands become soft, shiny and fluffy. And smell beautifully too, of a fresh, ripe melon.

▶ easy combing
▶ no rinsing required

200 ml | D004



 MAKE UP

HIGHLIGHT YOUR BEAUTY!

Enjoy the delightful palette of trendy colours, skin care formulas and excellent texture of our make-up cosmetics. Feminine beauty is what inspires us to create them.



FACE

Flawless complexion, rosy cheeks... Look fresh and glowing every single day! Especially for you, we created a wide selection of face make-up cosmetics in shades that perfectly match all types of beauty.



NB01



FB02



SILICONE BASE

SILICONE BASE

Extends the life of make-up. Mattifies and ensures a fresh look for a long time. Makes the skin perfectly smooth and ensures that pores and fine wrinkles are less noticeable.

- ▶ with vitamin C and E complex which has antioxidant properties
- ▶ recommended for the skin which requires mattifying and has a tendency to shine

15 ml | NB01

BEAUTY CREAM PRIMER

BEAUTY CREAM PRIMER

Thanks to the pearlescent pigments your skin gains a healthy glow, whereas imperfections and fine wrinkles are less visible. Delicate pink colour enlivens the complexion and reduces the signs of tiredness.

- ▶ hyaluronic acid and Hydromanil® deeply moisturise and smooth your skin
- ▶ it's a match if your skin is greyish, tired and lacks a healthy glow

15 ml | FB02



TOTAL MATTE FOUNDATION

TOTAL MATTE FOUNDATION

Mattifies for up to 10 hours. Perfectly evens out the skin tone, conceals blemishes and imperfections, reduces the appearance of pores.

- ▶ pleasant velvet mousse finish
- ▶ recommended for oily and combination skin which has a tendency to shine

25 ml



HONEY CAKE
FL26

▶ **ADVANCED FOUNDATION***
ADVANCED FOUNDATION
COVERING EFFECT



30 ml

A carefully selected combination of polymers ensures perfect coverage and a satin skin effect. Spreads easily. Provides a natural appearance without the "mask effect".

- ▶ silicone coated pigments provide a long-lasting colour
- ▶ suitable for all skin types



ALABASTER
FL14



IVORY
FL16



BEIGE NUDE
FL15



NATURAL BEIGE
FL17



WARM WALNUT
FL18



GINGER CAKE
FL19

Try
the sample sachets.



▶ **SECOND SKIN FOUNDATION***
SECOND SKIN FOUNDATION

Created on the basis of micronized pigments which perfectly adapt to the natural skin tone and cover up imperfections by reflecting the light.

- ▶ slightly brightening
- ▶ light formula
- ▶ suitable for all skin types



PORCELAIN
FL22



NATURAL CREAM
FL21



SAND BEIGE
FL23

Try
the sample sachets.



LIGHT CONCEALER

LIGHT CONCEALER
LUMINOUS EFFECT

Perfectly conceals dark circles under eyes and minor discolouration. Makes fine wrinkles less visible.

- ▶ formula enriched with soothing ingredients and vitamin E
- ▶ eliminates signs of fatigue making the skin look fresh and radiant

2,2 g



PORCELAIN BEIGE
CO06



MEDIUM BEIGE
CO07

* AVAILABLE WHILE STOCKS LAST



CC COLLECTION

Is your skin demanding? Do you want to provide it with everything it needs? If so, you no longer need to spend hours in front of the mirror. The CC cosmetics are an exceptional collection created to meet all needs of your skin.



Try the sample sachets.



BRIGHT IVORY
CC06



GENIUS NUDE
CC04

CC CREAM COLOUR & CARE

CC CREAM COLOUR & CARE

An innovative combination of a nourishing cream, foundation, and a UV filter – everything your skin needs in one product. The CC Cream Colour & Care nourishes and moisturises the skin, makes it smooth, elastic and soft.

- ▶ conceals and covers up imperfections, giving the skin a fresh and natural look
- ▶ result: radiant, fresh, healthy and naturally looking skin

30 ml



WISE GREEN
CC09

CC PRIMER COLOUR & CARE

CC PRIMER COLOUR & CARE

Combines several functions: nourishes the skin, evens out its tone, prepares the skin for make-up and extends its life.

- ▶ green shade neutralises redness and corrects imperfections
- ▶ recommended for couperose skin with visible redness

15 ml

CC PRIMER COLOUR & CARE*

CC PRIMER COLOUR & CARE

Evens out the skin tone, nourishes it and prepares it for further treatment. Extends the life of make-up and ensures a matte finish.

- ▶ peach shade brightens the skin tone and neutralises imperfections
- ▶ perfect solution for skin with discolouration and uneven shade



BRILLIANT PEACH
CC10

CC POWDER COLOUR & CARE

CC POWDER COLOUR & CARE

Unique, multifunctional Powder which evens up the skin tone, nourishes and protects it while ensuring perfect coverage and a flawless look. Perfectly conceals redness and imperfections, provides silky smoothness.

- ▶ with vitamins C and E, a raspberry extract and soothing passion fruit oil
- ▶ guarantees a long-lasting, matte make-up finish

6,5 g



SPF 25



SENSIBLE BISCUIT
CC07



CLEVER HONEY
CC08

* AVAILABLE WHILE STOCKS LAST

CONTOUR KIT

CONTOUR KIT

Irreplaceable trio for professional face contouring: contouring powder, bronzer and highlighter. Harmoniously matched colours, which allow to contour the shape of your face, emphasise its assets and conceal imperfections.

► includes ingredients reducing the effect of oily complexion

► in an elegant cassette with a mirror

6,6 g | ZT1



1. CONTOURING POWDER



2. BRONZER



3. HIGHLIGHTER

MINERAL POWDER*

MINERAL POWDER
ILLUMINATING EFFECT

Micronized pigments subtly brighten up the skin, conceal fine lines and imperfections.

► with an A, E, and F vitamin complex, which gives the skin a beautiful and healthy look

9 g



OPAL
NP14



DESERT ROSE
NP15



HONEY BROWN
NP10



PT2



FIXING POWDER

FIXING POWDER

Guarantees a long-lasting make-up finish. An excellent combination of mineral ingredients makes the skin matte and velvety to the touch.

► perfectly adapts to the foundation shade and skin tone

► subtle fragrance of white tea

10 g | PT2



PERFECT BEIGE
NP16

MINERAL LOOSE POWDER

MINERAL LOOSE POWDER

Excellent for setting foundation and obtaining a perfect make-up finish. Contains silica which optically reduces wrinkles and minor skin imperfections.

► with kaolin which absorbs sebum

► highly efficient and long-lasting

10 g



AMBER
NP13

MINERAL POWDER*

MINERAL POWDER
BRONZING EFFECT

Two perfectly matched shades warm up the skin tone and give it a gorgeous golden glow.

► contains argan oil, which intensely moisturises and regenerates the skin

10 g

* AVAILABLE WHILE STOCKS LAST
** AVAILABLE WHILE SERIES LASTS



BAMBOO POWDER

BAMBOO POWDER

Transparent, suitable for all skin types. Excellent for touch ups during the day and to finish your make-up with.

- ▶ with a mattifying bamboo extract
- ▶ a cosmetic, which you should always have on hand

6,4 g | P020



P020

BAKED POWDER*

BAKED POWDER
SUN-KISSED EFFECT

Contains pearlescent pigments which give the skin a natural-looking tan and a delicate, sun-kissed glow. Irreplaceable for highlighting the face, neckline and shoulders. Use it also as a golden eyeshadow.

- ▶ for the fans of subtle illumination

7 g



GOLDEN BROWN
NP04

MINERAL BLUSH**

MINERAL BLUSH

Elegant shades subtly emphasise cheekbones and contour the oval of the face.

- ▶ adds charm and youthful freshness to your face
- ▶ with moisturising sapphire and a vitamin A, E and F complex which care for the beauty of your skin

8 g



CORAL
NR02



SUN TOUCH
NR01

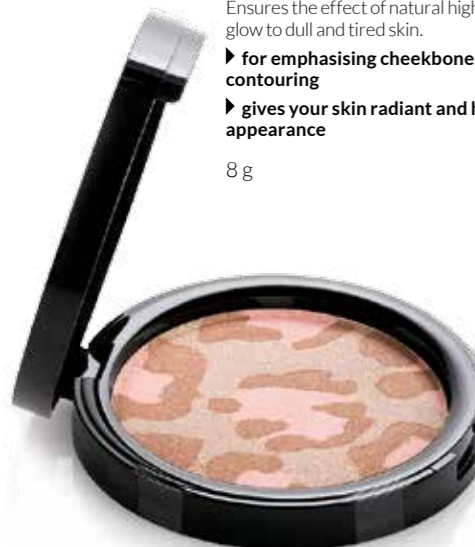
MULTICOLOUR HIGHLIGHTER

MULTICOLOUR HIGHLIGHTER

Ensures the effect of natural highlight, restoring glow to dull and tired skin.

- ▶ for emphasising cheekbones and face contouring
- ▶ gives your skin radiant and healthy appearance

8 g



GOLDEN JEWEL
P019



PRECIOUS PINK
P018

GLOW POWDER PEARLS

GLOW POWDER PEARLS
ILLUMINATING EFFECT

Multi-coloured pearls highlight the natural beauty of the skin and create a perfect, well-rested face make-up finish.

- ▶ work perfectly with daytime and evening make-ups!

20 g | PK09



BAKED BLUSH**

BAKED BLUSH

A high content of glittering flecks ensures a pearly glow and a beautiful colour.

- ▶ a simple way to make a tired face look radiant and rested
- ▶ infused with jojoba oil to nourish the skin

1,4 g



DELICIOUS PAPAYA
NR03



GOLDEN TOFFEE
NR05



MAKE UP SETTING SPRAY

MAKE UP SETTING SPRAY

Creates an invisible coating to protect your make-up. Doesn't leave your skin feeling sticky or tight.

- ▶ refreshes and adds a healthy glow throughout the day
- ▶ in the form of a light, moisturizing mist

100 ml | UM1

* AVAILABLE WHILE STOCKS LAST
** AVAILABLE WHILE SERIES LASTS



EYES

Tempt with your eyes! With our cosmetics you will contour and highlight the shape of your eyes, and create outstanding day and night make-ups. Meet the fabulous colours of our eye make-up cosmetics!



EYESHADOW BASE

EYESHADOW BASE

Increases intensity and colour depth. Extends the life of eye make-up.

- ▶ the nude shade conceals imperfections and evens out the skin tone
- ▶ suitable for all types of eyeshadows

4 g | **CB02**



CB02

DUO EYESHADOWS*

DUO EYESHADOWS

Perfectly matched duo of colours allows you to create impressive make-ups.

- ▶ choose from the stylish pearl-matte (Inky Night, Volcanic Brown) and the elegant satin-half-matte (Blur Burgundy) eyeshadows

3 g



**INKY NIGHT
NC05**



**BLUR BURGUNDY
NC06**



**VOLCANIC BROWN
NC08**

MINERAL EYESHADOWS*

MINERAL EYESHADOWS

A trio of harmoniously matched colours. With a subtle pearly sheen.

- ▶ based on carefully selected mineral ingredients

6 g



**CHOCOLATE MOUSSE
NC01**



**SILVER DUST
NC02**



**FALL GREEN
NC04**

* AVAILABLE WHILE SERIES LASTS



MINERAL LOOSE EYESHADOWS*

MINERAL LOOSE EYESHADOWS

Light, mineral dust in fancy colours.

► for dry and wet application

► apply: with a brush, sponge, or a fingertip

1,3 g



VINTAGE GOLD
C014



MILK SHAKE**
C041



CITY NIGHT
C016



PEARLY DEW
C011



PURE WHITE
CN25



EBONY BLACK
CN27



WENGE WOOD
CN19



CASHMERE EYESHADOW*

CASHMERE EYESHADOW

The cashmere-soft creamy texture facilitates precise application of the Eyeshadow.

► intense pigmentation and a saturated colour

2,5 g



VIOLET STAR
C038



COSMIC BROWN
C039



GOLDEN DUST
C035

METALLIC EYESHADOW*

METALLIC EYESHADOW

With a beautiful metallic lustre and a creamy-powdery texture.

► long-lasting pigments provide excellent coverage of the eyelid

2,6 g

* AVAILABLE WHILE SERIES LASTS
** SATIN VERSION
*** MATTE VERSION

MOM AND ME

The first steps in make-up are great fun! Introduce your little princess to the world of cosmetics in a safe and pleasant way.



Suitable
for kids over 3 years.

FM KIDS MAKE UP BOX

FM KIDS MAKE UP BOX

The kit includes a bubble gum scented lip gloss, three eyeshadows, and a peach aroma blush.

► can be easily removed with a rich cream for children

► gentle formula created on the basis of food colourings

8,5 g | ND01

LEVIWA Kosmetyki
ROKU
2013



BROW & LASH CREATOR

BROW & LASH CREATOR

An irreplaceable duet of eyebrow gel and mascara primer to create a charming look and the perfect eye make-up.

- ▶ transparent gel perfectly tames unruly brow hairs and preserves the desired shape
- ▶ primer thickens and lengthens the eyelashes adding exceptional volume and intensifying the effect of each mascara application

14 ml | **BL1**

90% of women

confirmed an improvement
in the condition of their
eyelashes after 4 weeks of use**



LASH SPECIALIST SERUM

LASH SPECIALIST SERUM

Concentrated elixir stimulates eyelash growth and prevents hair fall-out.

- ▶ lashes become longer, thicker and fuller
- ▶ hypoallergenic, suitable for contact lens wearers

4 ml | **SS1**



ROYAL BLUE
M004



DARK BROWN
M005

VOLUME DESIGNER LASH MASCARA*

VOLUME DESIGNER LASH MASCARA

Gives a uniform, deep colour. Does not smear or crumble.

- ▶ an intense look and dream volume
- ▶ thick wand with dense bristles thoroughly coats eyelashes and makes them look thicker

11 ml



3 STEP MASCARA

3 STEP MASCARA

An innovative formula stunningly increases the eyelash volume and moisturises them properly.

- ▶ 3 in 1: extended, thickened, lifted eyelashes
- ▶ the exceptional shape of the wand allows for application of the mascara from roots to ends

8 ml | **M002 PERFECT BLACK**



LASH EXPERT MASCARA

LASH EXPERT MASCARA

Perfect eye make-up even for up to 12 hours, without smudging or crumbling.

- ▶ maximally lengthened and flirtatiously curled eyelashes
- ▶ an asymmetric, flexible wand: shapes and lifts the lashes with the bigger bristles, and coats and separates even the tiniest hairs with the smaller bristles

11 ml | **M007 GLAM BLACK**



PHENOMENAL MASCARA

PHENOMENAL MASCARA

Advanced formula and an ultra-precise wand guarantee a panoramic eyelash effect. Contains an innovative ingredient which enhances lash growth.

- ▶ lengthened, thickened, perfectly separated and curled lashes
- ▶ flexible mini-wand perfectly emphasises even the shortest and most delicate hairs

10 ml | **M006 INTENSE BLACK**



WATERPROOF LASH TOP COAT

WATERPROOF LASH TOP COAT

Creates an invisible coating that makes every mascara waterproof. Protects against crumbling and smudging.

- ▶ protects eyelashes against humidity and water
- ▶ hypoallergenic

8 ml | **WM1**

** A FOUR-WEEK STUDY CONDUCTED BY AN INDEPENDENT LABORATORY ON A GROUP OF 29 WOMEN AGED 29-53 YEARS.

* AVAILABLE WHILE STOCKS LAST

LIPS

Barely touched or in a strong saturated colour? Glossy or matte? In lip make-up we offer unlimited choice!



LI21



ICY LIPSTICK*

ICY LIPSTICK

Transparent to extract your natural lip colour.

- ▶ with jojoba oil and rosemary extract - acts as the best balm
- ▶ recommended for everyday use

3,5 g | LI21



LI14

SUGAR LIP SCRUB**

SUGAR LIP SCRUB

Removes dead epidermis, and makes your lips soft and smooth. Perfectly prepares your lips for lipsticks, lip glosses and lip tints.

- ▶ contains sugar crystals, shea butter, panthenol, and vitamins C and E
- ▶ with a tempting mango aroma

1,9 g | LI14



LASTS UP TO 8 HOURS



CORAL HIBISCUS MP01



PINK ORCHID MP02



RED ROSE MP03

MATTE LIP COLOUR**

MATTE LIP COLOUR

Full coverage lipstick, provides a total matte finish and a stunningly deep colour.

- ▶ wear and smudge resistant
- ▶ does not make the lips dry, leaves it smooth and soft

5 ml



1



PLUM GOLD LIN4



SUBTLE ROSE LIN3



2



INNOCENT PINK LIN2



3



SPICY NUDE LIN1



CHILLY BROWN LIN5

◀ 1

LIP GLOSS**

LIP GLOSS

Carefully selected pigments make your lips look luscious.

- ▶ tempting colour and gloss

9 ml

◀ 2

LIP GLOSS*

LIP GLOSS

WET LIP EFFECT

Delicate colour and shimmering particles make your lips shine as if they were wet.

- ▶ provides a sensual gloss

9 ml

◀ 3

LIP GLOSS**

LIP GLOSS

PLUMP LIP EFFECT

A toning-cooling substance makes your lips fuller by stimulating micro-circulation.

- ▶ subtly bigger lip effect

9 ml

* AVAILABLE WHILE STOCKS LAST
** AVAILABLE WHILE SERIES LASTS



CANDY PINK
BP1



PEACHY ROSE
BP3



HOT RED
LN01



PALE FUCHSIA
LN02



AUSTRALIAN SAND
LN03



SUNRISE PINK
LN04



SWEET LATTE
LN05



HOT RED
LI06



PALE FUCHSIA
LI07



AUSTRALIAN SAND
LI08



SUNRISE PINK
LI10



SWEET LATTE
LI09



ELEGANT RED
LI25



FANCY CORAL
LI26

Apply
the tint on clean,
oil-free lips!

Store
in a horizontal
position!



CHERRY
LI18



PEACH
LI17



WILD STRAWBERRY
LI20



▲ GLOSSY LIPSTICK

GLOSSY LIPSTICK
Combination of a delicate colour with intense gloss and light reflections.
▶ contains protective waxes
▶ excellent for everyday lip make-up

4 g

▲ EXTRA RICH LIPSTICK*

EXTRA RICH LIPSTICK
Gives your lips a stylish colour and delicate sheen. You can choose a matching lipliner to each lipstick shade.
▶ classics – always timeless
▶ with moisturizing oils: argan and jojoba as well as shea butter

4 g

▶ AUTOMATIC LIPLINER*

AUTOMATIC LIPLINER
With extraordinary precision underlines the contour and enhances the natural beauty of your lips.
▶ 5 colours perfectly matching the Extra Rich Lipstick shades
▶ waterproof

0,31 g

▲ GLAM LIP TINT & BALM

GLAM LIP TINT & BALM
Harmonious combination of a long-lasting, juicy colour and a seductive sheen.
▶ a sensational result – once you've precisely applied the Tint you can leave your lips matte or make them shine with the Balm

4,46 g

▶ FRUITY LIP GLOSS*

FRUITY LIP GLOSS
Pampers the senses with an appetising aroma and a delicate flavour.
▶ shiny colours subtly emphasise the tone and shape of your lips

15 ml

*AVAILABLE WHILE SERIES LASTS

MAKE-UP REMOVAL

Perfectly cleansed skin in the morning and before bedtime is a recipe for healthy complexion. Do not forget it and keep appropriate make-up removers always at hand.



2 PHASE MAKE-UP REMOVER

2 PHASE MAKE-UP REMOVER

Gently, yet highly successfully, removes eye and lip make-up, also waterproof.

- ▶ leaves the skin moisturised, soft and smooth
- ▶ hypoallergenic, safe for sensitive eyes and contact lens wearers

150 ml | **609001**



MICELLAR LOTION

MICELLAR LOTION

Removes make-up and cleanses the skin, perfectly preparing it for further care.

- ▶ based on rose water and Rosa Centifolia petals
- ▶ perfectly refreshes the skin

200 ml | **M103**



*After use,
wipe the stick
with a tissue.*

CORRECTOR PEN*

CORRECTOR PEN

Removes even the tiniest make-up mistakes without damaging your look.

- ▶ precise and convenient
- ▶ fits even into a small, evening purse

3 ml | **CO03**

*AVAILABLE WHILE STOCKS LAST

HANDS

You know what they say: your hands are your business card. Take a good care of them! We recommend daily care of cuticles and using strengthening conditioners, so that your painted nails always looked healthy and classy.



CUTICLE & NAIL CREAM

CUTICLE & NAIL CREAM

Well-groomed cuticles and beautiful, healthy nails thanks to daily care.

- ▶ with strengthening argan oil and regenerating shea butter
- ▶ moisturizes, restores softness to cuticles and flexibility to the nail plate

15 ml | **KR4**



CUTICLE SOFTENER

CUTICLE SOFTENER

Designed to nourish the cuticles around the nail plate.

- ▶ contains scrub particles which subtly exfoliate and smooth the cuticles
- ▶ algae extract softens the cuticles and facilitates their successful removal

10 ml | **N108**



NAIL CONDITIONER 8 IN 1

NAIL CONDITIONER 8 IN 1

A real multi-tasker: intensely regenerates, strengthens, protects, provides smoothness, restores the lustre, dries fast and lasts long.

- ▶ visibly improves the appearance and condition of damaged nails
- ▶ prevents breaking, crushing and splitting

10 ml | **N112**

NAIL CONDITIONER WITH KERATIN

NAIL CONDITIONER WITH KERATIN

Designed for splitting nails.

- ▶ keratin regenerates and hardens the nail plate protecting it against damage

10 ml | **N109**



NAIL HARDENER

NAIL HARDENER

Diamond powder strengthens and hardens nails, giving them a lasting shine.

- ▶ excellent as a nail polish primer

10 ml | **N104**

NAIL LACQUER*

NAIL LACQUER

The formula enriched with calcium, strengthening keratin, A and E vitamins which nourish the nails.

- ▶ guarantees deep colour and intensive shine
- ▶ quick-drying, long-lasting

10 ml



SUNRISE PINK**
N005

SWEET LATTE**
N004

RUBY WINE
N016

BLACK ROSE
N034

LILAC
N023

WHITE LILY
N035

HOT RED
N003



RUBY WINE
N016

APRICOT
N021

PALE FUCHSIA
N002

DEEP SCARLET
N010



BLACK ROSE
N034

CATWALK ORANGE
N041



CHIC PINK
N042



STYLISH RED
N043



POSH RED
N044



FASHION CREAM
N038



TRENDY BEIGE
N039



GLAM BROWN
N040



COMING SOON
Nail Lacquers
Gel Finish
in new bottles!



NAIL LACQUER

NAIL LACQUER

GEL FINISH

Ultra-glossy formula with a gel finish effect.

- ▶ provides a saturated, long-lasting colour and excellent coverage from the first application
- ▶ resistant to chipping, abrasion and dulling
- ▶ with a wide nail polish brush

11 ml



▼
NAIL TOP COAT*
NAIL TOP COAT
MATTE EFFECT

Gives the painted nails a trendy, matte look.
Extends the life of the manicure.

▶ with protective polymers

10 ml | N036



▶
NAIL TOP COAT*
NAIL TOP COAT
GLOSSY EFFECT

Provides the painted nails a mirror shine and
intense colour. Extends the life of the manicure.

▶ polymer coat hardens the nail plate and
prevents lacquer abrasion

10 ml | N037

▲
**NAIL LACQUER
DRYING SPRAY**

NAIL LACQUER DRYING SPRAY

Accelerates lacquer drying on nails and protects it
against smudges and scratches.

▶ gives a beautiful shine and emphasises
the nail polish colour

50 ml | N100



▲
NAIL POLISH REMOVER
NAIL POLISH REMOVER

Quickly and effectively removes even dark polish
- without smudging and drying the nail plate.

▶ moisturises nails and makes cuticles soft
and delicate

▶ with a strengthening horsetail extract
and a vitamin E, B6 and PP complex

▶ acetone-free

100 ml | 603001



▶
NAIL LACQUER REMOVER*
NAIL LACQUER REMOVER

Two-phase: the upper layer properly removes
the lacquer while the lower one nourishes,
moisturises, and regenerates the nails.

▶ acetone-free

100 ml | N106



*Shake well
before use to mix
the layers thoroughly.*

*AVAILABLE WHILE STOCKS LAST

ACCESSORIES

Professional tools allow you to perform beautiful and professional make-ups. That is why we prepared a wide selection of brushes and appropriate products to care for them, as well as other sensational accessories.

1



◀ 1
FOUNDATION BRUSH
FOUNDATION BRUSH
Designed for application of liquid foundations and concealers.
▶ made with synthetic bristles
W008

2



◀ 2
POWDER BRUSH
POWDER BRUSH
Excellent for application and spreading of powder, both loose and pressed.
▶ made with natural bristles
W004

3



◀ 3
BLUSH BRUSH
BLUSH BRUSH
Designed for application of blushes, bronzers, and also for face-contouring.
▶ made with natural bristles
W005

*AVAILABLE WHILE STOCKS LAST

4



▲ 4
BLENDING BRUSH
BLENDING BRUSH
Essential for combining and blending colours.
▶ made with natural bristles
W012

5



▲ 5
EYESHADOW BRUSH
EYESHADOW BRUSH
Designed for precise application of eyeshadows.
▶ made with natural bristles
W007

6



◀ 6
EYESHADOW SPONGE
EYESHADOW SPONGE
For application of all types of eyeshadows.
▶ made with soft sponge
W003

7



◀ 7
LIP BRUSH
LIP BRUSH
Designed for precise application of lipsticks and lip glosses.
▶ made with top quality synthetic bristles
W013



MAKE-UP BRUSH CASE
MAKE-UP BRUSH CASE
8 compartments suiting various types of brushes.
▶ convenient and safe storage
W011

HANDY DIMENSIONS:
23 cm x 13,5 cm x 6,5 cm



PAPER BAG
PAPER BAG
Perfect for small gifts.
▶ very elegant
930010

DIMENSIONS:
15 x 15 x 8 cm



FOR HER

PURE 01	p.21	PURE 132	p.21	FM 292	p.41	FM 365	p.40
PURE 05	p.22	FM 141	p.41	FM 296	p.37	FM 366	p.37
PURE 06	p.22	FM 142	p.36	FM 297	p.42	FM 367	p.41
PURE 07	p.21	FM 146	p.43	FM 298	p.39	PURE 400	p.20
PURE 09	p.18	FM 147	p.43	FM 313	p.38	PURE 401	p.21
PURE 10	p.20	FM 149	p.34	FM 317	p.43	PURE 402	p.18
PURE 12	p.18	FM 162	p.36	FM 318	p.43	PURE 404	p.18
PURE 16	p.22	PURE 173	p.19	FM 319	p.38	PURE 412	p.20
PURE 17	p.20	PURE 174	p.21	FM 320	p.40	PURE 413	p.18
PURE 18	p.22	PURE 177	p.19	FM 321	p.40	PURE 414	p.21
PURE 20	p.21	PURE 180	p.20	FM 322	p.41	PURE 415	p.20
PURE 21	p.20	PURE 181	p.20	FM 323	p.41	PURE 416	p.20
PURE 23	p.22	PURE 183	p.21	FM 351	p.40	PURE 417	p.19
PURE 24	p.19	FM 192	p.34	FM 352	p.43	PURE 418	p.20
PURE 25	p.20	FM 237	p.32	FM 353	p.43	PURE 419	p.22
PURE 26	p.19	FM 239	p.32	FM 354	p.43	PURE 420	p.20
PURE 29	p.20	FM 241	p.32	FM 355	p.43	PURE 421	p.22
PURE 32	p.19	PURE 257	p.18	FM 356	p.34	PURE 422	p.18
PURE 33	p.22	PURE 263	p.18	FM 357	p.35	PURE 423	p.18
PURE 34	p.22	PURE 271	p.20	FM 358	p.38	PURE 424	p.18
PURE 80	p.22	PURE 272	p.20	FM 359	p.36	PURE 425	p.18
PURE 81	p.21	FM 281	p.41	FM 360	p.39	FM 600	p.33
PURE 97	p.21	FM 283	p.39	FM 361	p.41		
PURE 98	p.18	FM 286	p.37	FM 362	p.34		
PURE 101	p.18	FM 287	p.38	FM 363	p.36		
PURE 125	p.20	FM 291	p.41	FM 364	p.36		

FOR HIM

PURE 43	p.25	FM 151	p.45	FM 326	p.49	PURE 458	p.26
PURE 52	p.26	FM 152	p.45	FM 327	p.46	PURE 459	p.26
PURE 54	p.25	FM 160	p.46	FM 328	p.48	PURE 460	p.27
PURE 55	p.27	FM 169	p.44	FM 329	p.45	PURE 461	p.27
PURE 56	p.25	PURE 189	p.25	FM 331	p.46	PURE 462	p.27
PURE 57	p.28	FM 195	p.44	FM 332	p.47	PURE 463	p.28
PURE 63	p.25	FM 198	p.46	FM 333	p.44	PURE 464	p.25
PURE 64	p.26	FM 199	p.49	FM 334	p.46	PURE 465	p.26
PURE 68	p.25	PURE 224	p.26	FM 335	p.49	PURE 466	p.26
PURE 93	p.28	FM 300	p.47	FM 336	p.49	PURE 467	p.28
PURE 110	p.25	FM 301	p.49	PURE 451	p.28	PURE 468	p.26
PURE 134	p.28	FM 302	p.48	PURE 452	p.28	PURE 469	p.27
PURE 135	p.25	FM 325	p.48	PURE 457	p.27	FM 601	p.33

UNISEX

UTIQUE Black	p.11
UTIQUE Gold	p.11
UTIQUE Ruby	p.10



All prices in the catalogue include 23% VAT. FM WORLD product catalogue no. 25 is valid from November 2016. The offer included in the catalogue in terms of prices and products is valid from November 2016 while stock lasts or until a new catalogue is introduced. Detailed information about the products and usage methods can be found on pl.fmworld.com, the Marketing Plan and other advertising, promotional, and information materials that are issued or explicitly approved by FM WORLD are the only authorised sources of information for the purpose of selling and advertising of FM WORLD. The FM WORLD branded products are genuine products by FM WORLD.

PRODUCTS FOR HER

fragrance family	key note	fragrances	pheromone	intense	shower gel	body balm	antiperspirant roll-on	hair fragrance	hand and nail cream
FLORAL	WITH A FLORAL NOTE	10, 17, 125, 180, 181, 281, 291, 367, 400, 412	10	10, 17	10*	10*			
		29, 271, 272, 292, 321, 322, 323, 415, 416, 420							
		25, 600		25	25*				
	WITH AN ORIENTAL NOTE	20, 132, 147							
		97, 183, 317, 352, 353, 401	97	97	97			97	
		146, 239, 297, 318, 354, 355							
	WITH A WATER NOTE	7, 141, 174, 361							
WITH A GREEN NOTE	1, 81		81	81	81	81	81	81*	
WITH AN ALDEHYDE NOTE	21, 418			21					
WITH A CITRUS NOTE	283, 298, 360								
WITH A WOODY NOTE	320, 351, 365, 414								
CITRUS	WITH A LEMON NOTE	33	33	33	33	33	33	33	33*
	WITH A FRUITY NOTE	419							
	WITH A MANDARIN NOTE	23, 296	23	23	23*		23*		
	WITH AN ORANGE NOTE	6							
ORIENTAL	WITH A FLORAL NOTE	9, 101, 257, 263, 402, 404, 423, 424	101	9					
	WITH A FRUITY NOTE	12, 98, 237, 286, 413	98	98					98*
	WITH A WOODY NOTE	26, 142, 162, 359, 363, 364 UTIQUE BLACK, GOLD, RUBY							
	WITH A SPICY NOTE	24, 173, 177, 366	173	173	173	173	173	173	173*
	WITH AN AMBERGRIS NOTE	32							
WITH A VANILLA NOTE	417								
WOODY	WITH A FLORAL NOTE	241, 287, 313							
	WITH A FRUITY NOTE	319, 358, 422							
	WITH AN ORIENTAL NOTE	425							
CHYPRE	WITH A FRUITY NOTE	5, 16, 34, 80, 149, 192, 362	5	5		5*	5*		
	WITH A WOODY NOTE	18, 357	18	18	18		18	18	
	WITH AN ORIENTAL NOTE	356							
WITH A FLORAL NOTE	421								

■ intense ■ medium intense ■ delicate

PRODUCTS FOR HIM

fragrance family	key note	fragrances	pheromone	intense	shower gel	antiperspirant roll-on	hand cream	shaving foam	after shave	aftershave balm
CHYPRE	WITH A FRUITY NOTE	169								
	WITH A WOODY NOTE	56	56	56		56*			56	
	WITH AN AMBERGRIS AND MUSK NOTE	110	110	110		110*			110	
ORIENTAL	WITH A FLORAL NOTE	52, 302, 328, 465	52	52	52	52	52*	52	52	52
	WITH A FRUITY NOTE	325								
	WITH A SPICY NOTE	199, 224, 336, 459, 466, 468			199	199			199	199
	WITH AN AMBERGRIS NOTE	64, 458	64	64					64	
WOODY	WITH A WOODY NOTE	301, 326, 335 UTIQUE BLACK, GOLD, RUBY								
	WITH A FRUITY NOTE	55, 195, 333								
	WITH A PATCHOULI NOTE	160, 198, 327, 331, 334								
	WITH A VETIVER NOTE	151, 152, 329								
FOUGERE	WITH A WATER NOTE	457, 460, 462								
	WITH A CITRUS NOTE	461, 469								
	WITH A FERN NOTE	43, 135, 332	43	43					43	
CITRUS	WITH A LAVENDER NOTE	54, 63, 68, 189, 300, 464, 601								
	WITH A LEMON NOTE	57								
	WITH A MANDARIN NOTE	134, 452	134	134	134	134	134*		134	134
WATER	WITH AN ORANGE NOTE	93								
	WITH A WATER NOTE	467								
	WITH A GREEN NOTE	451, 463								

*AVAILABLE WHILE STOCKS LAST



contact@distribution.fmworld.com;
complaints@distribution.fmworld.com;
order@distribution.fmworld.com.

distribution.fmworld.com.

BUSINESS PARTNER