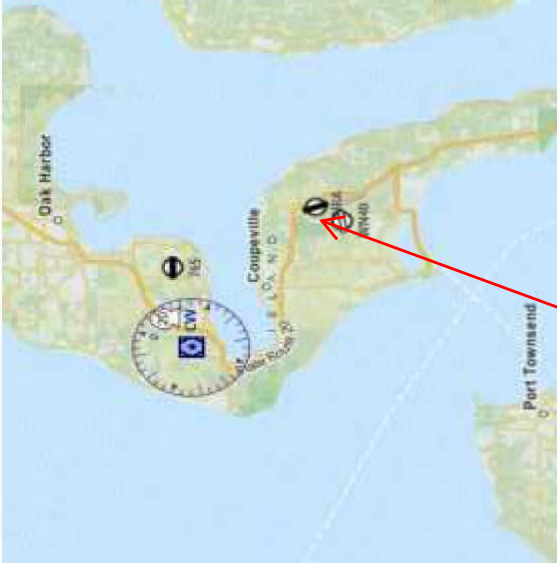


**OÙ ?  
QUAND ?  
COMMENT ?**



**c'est ici !  
dans l'Etat de  
Washington.  
Près de la frontière  
avec le Canada**



**là !**

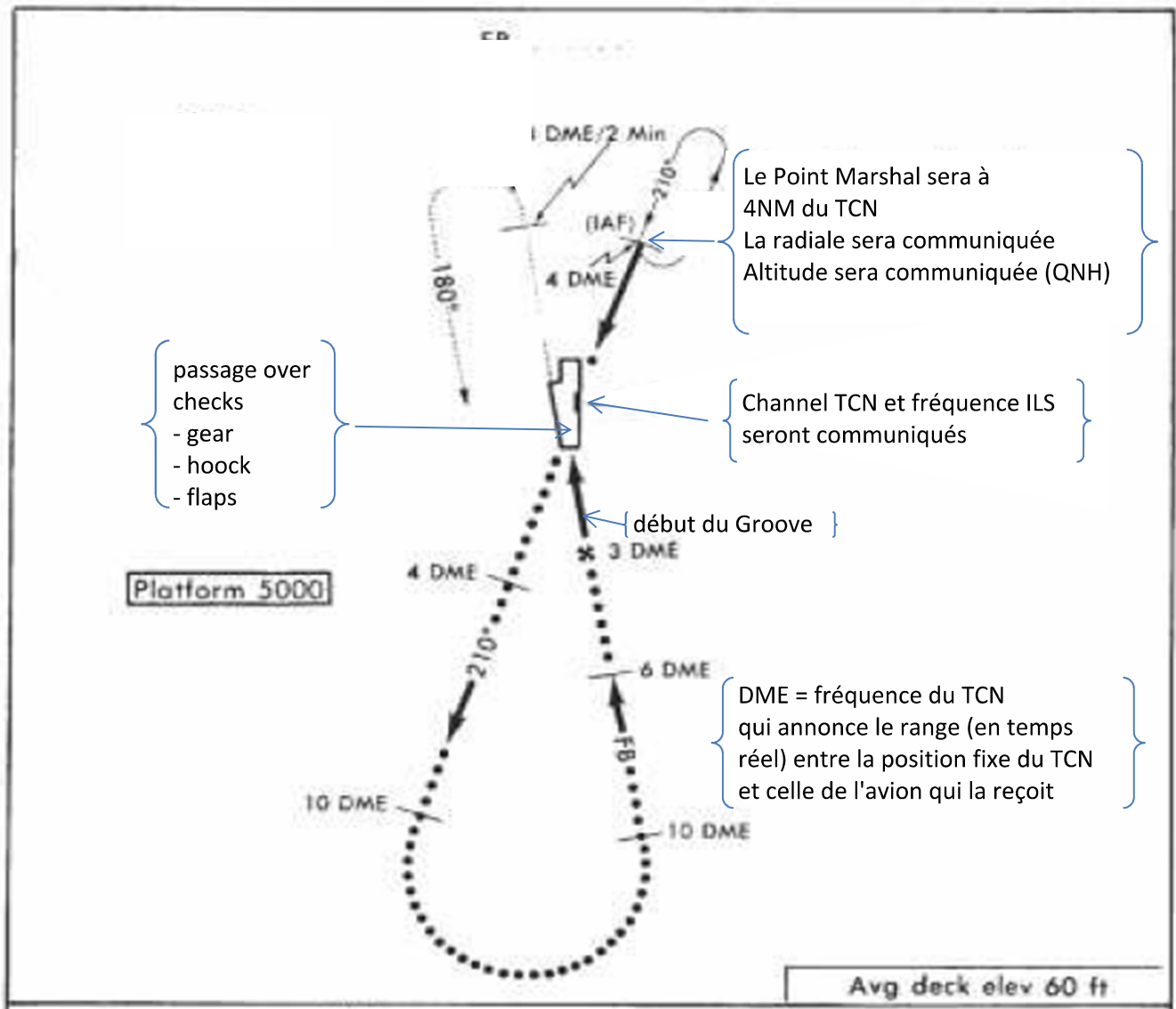


**KNRA Airport  
14/32**

**La Base de  
Coupeville NOLF  
(Naval Outlying Field)  
Terrain de manoeuvre  
jour/nuit  
pour l'entraînement à  
l'appontage**



**Terrains de dégagement  
KOKH 4 NM  
KNUW 10 NM**

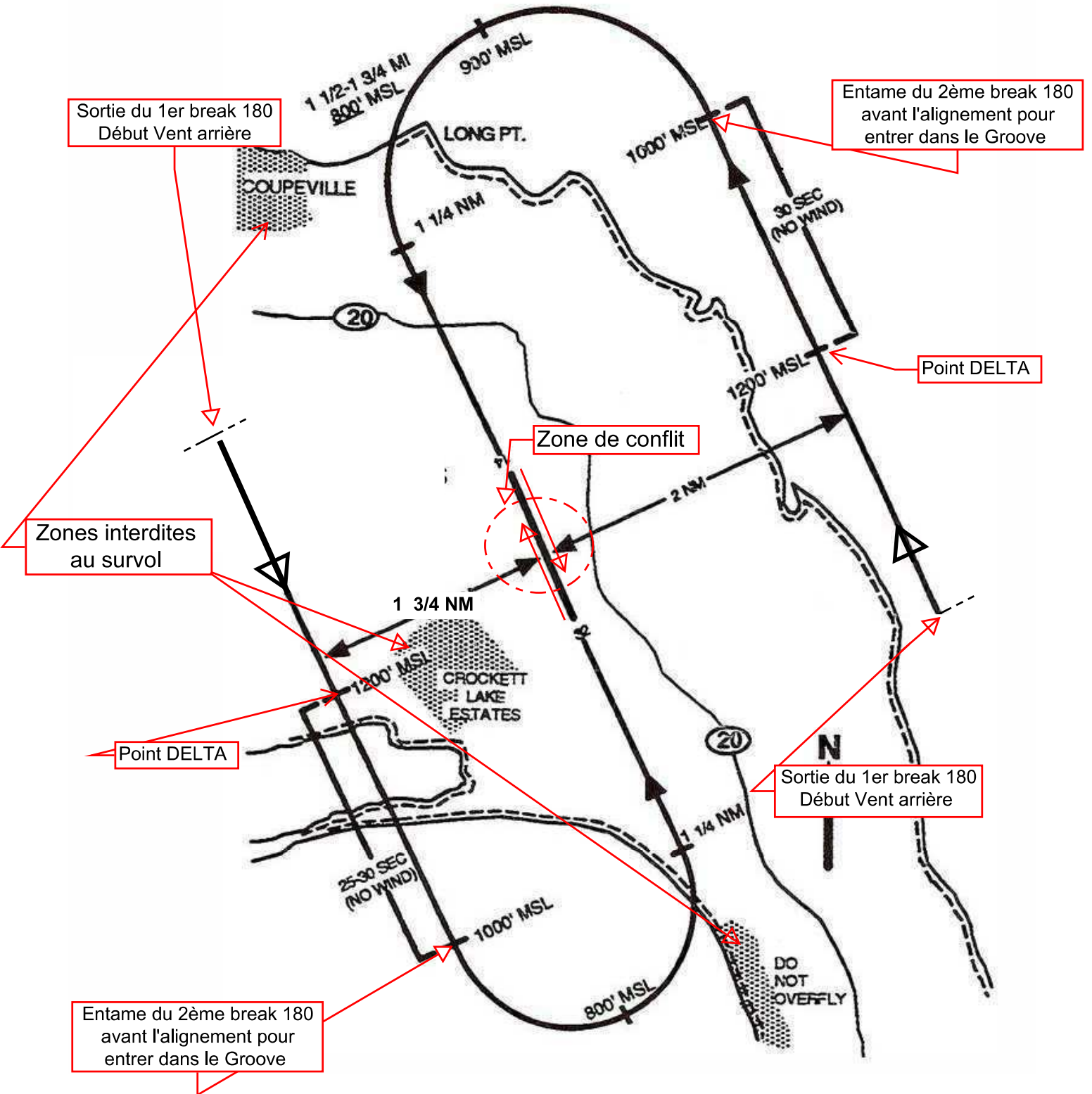


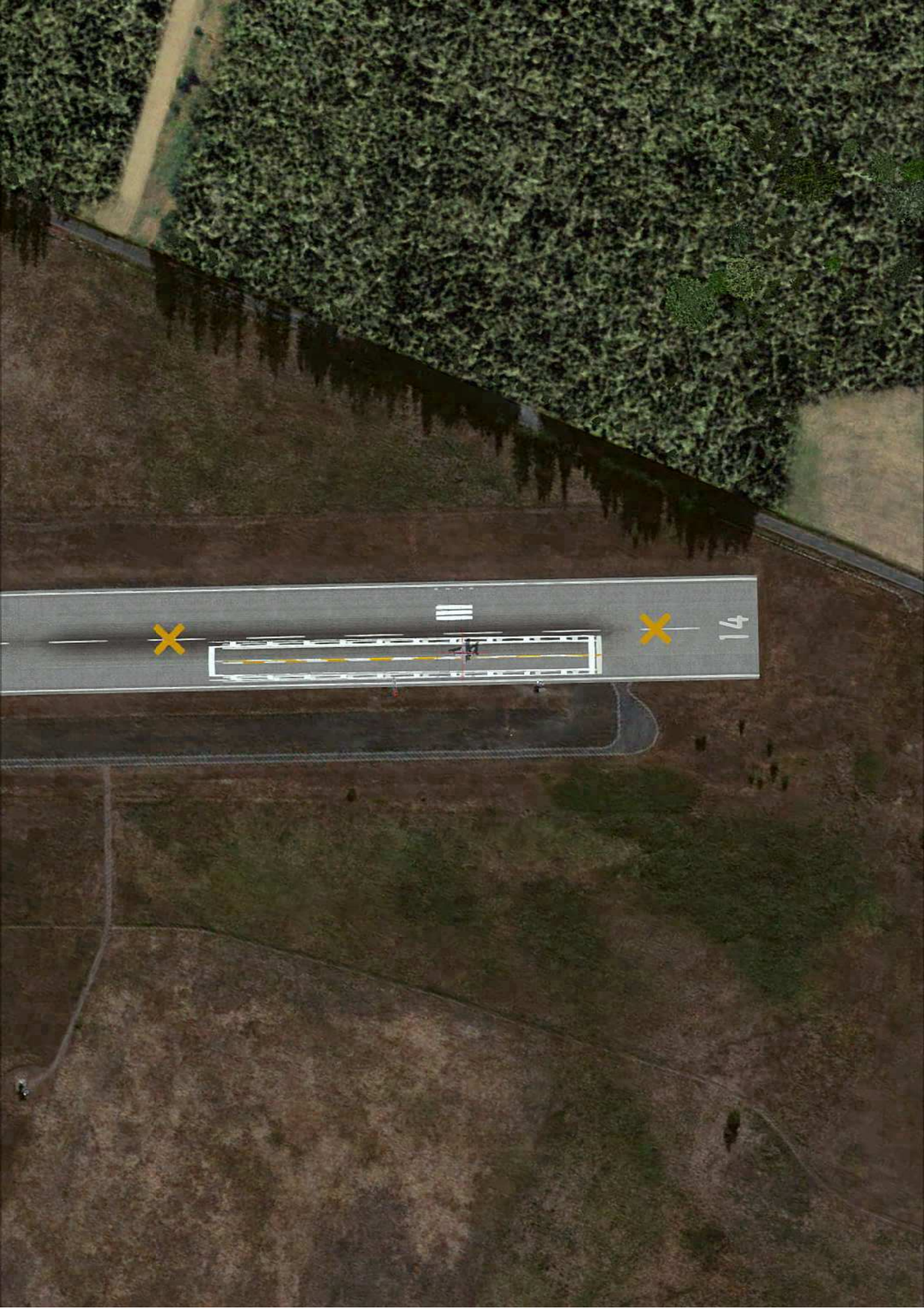
# NOLF COUPEVILLE NIGHT PATTERN, RUNWAY 14/32

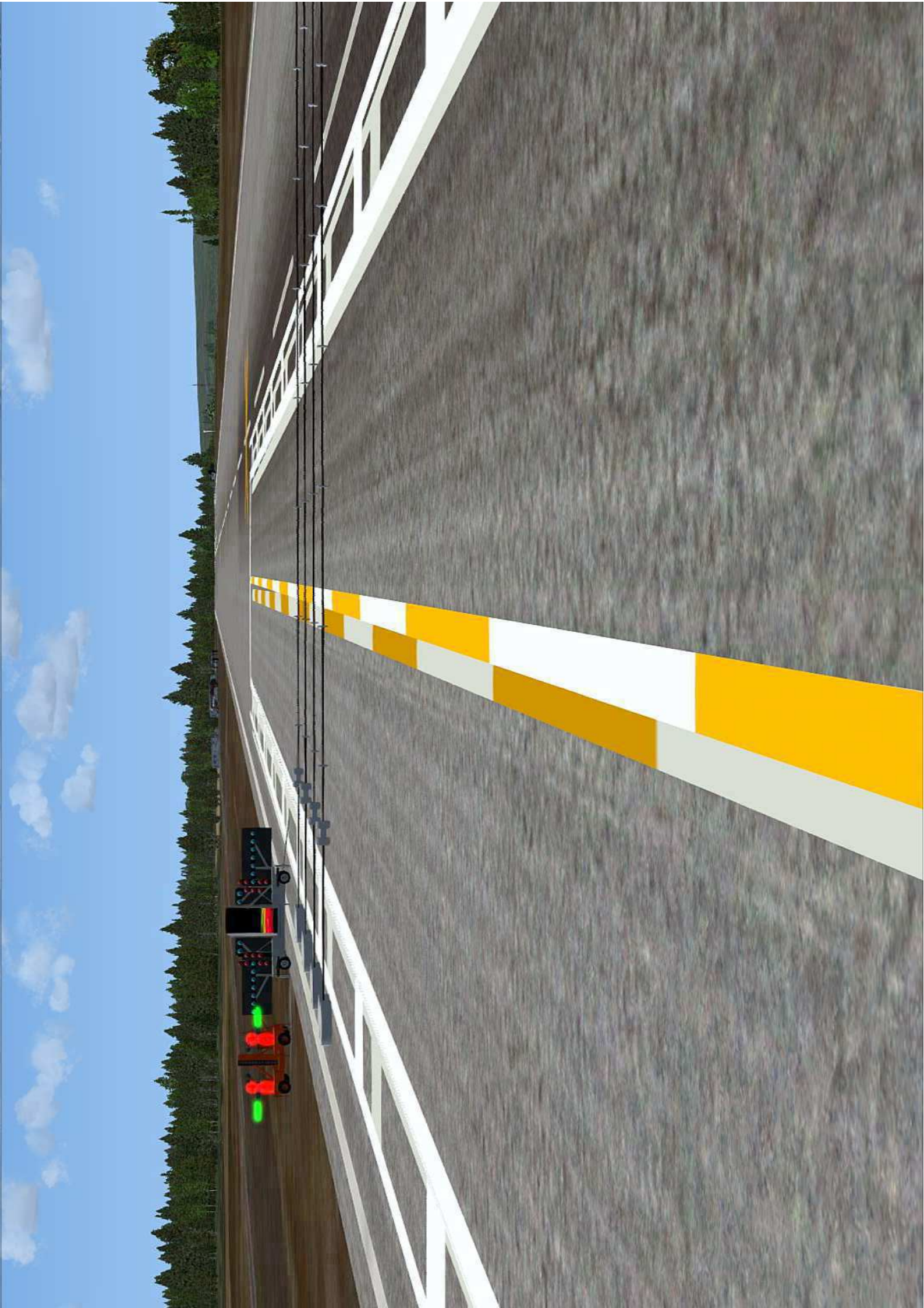
**Pour les 2 sens :**

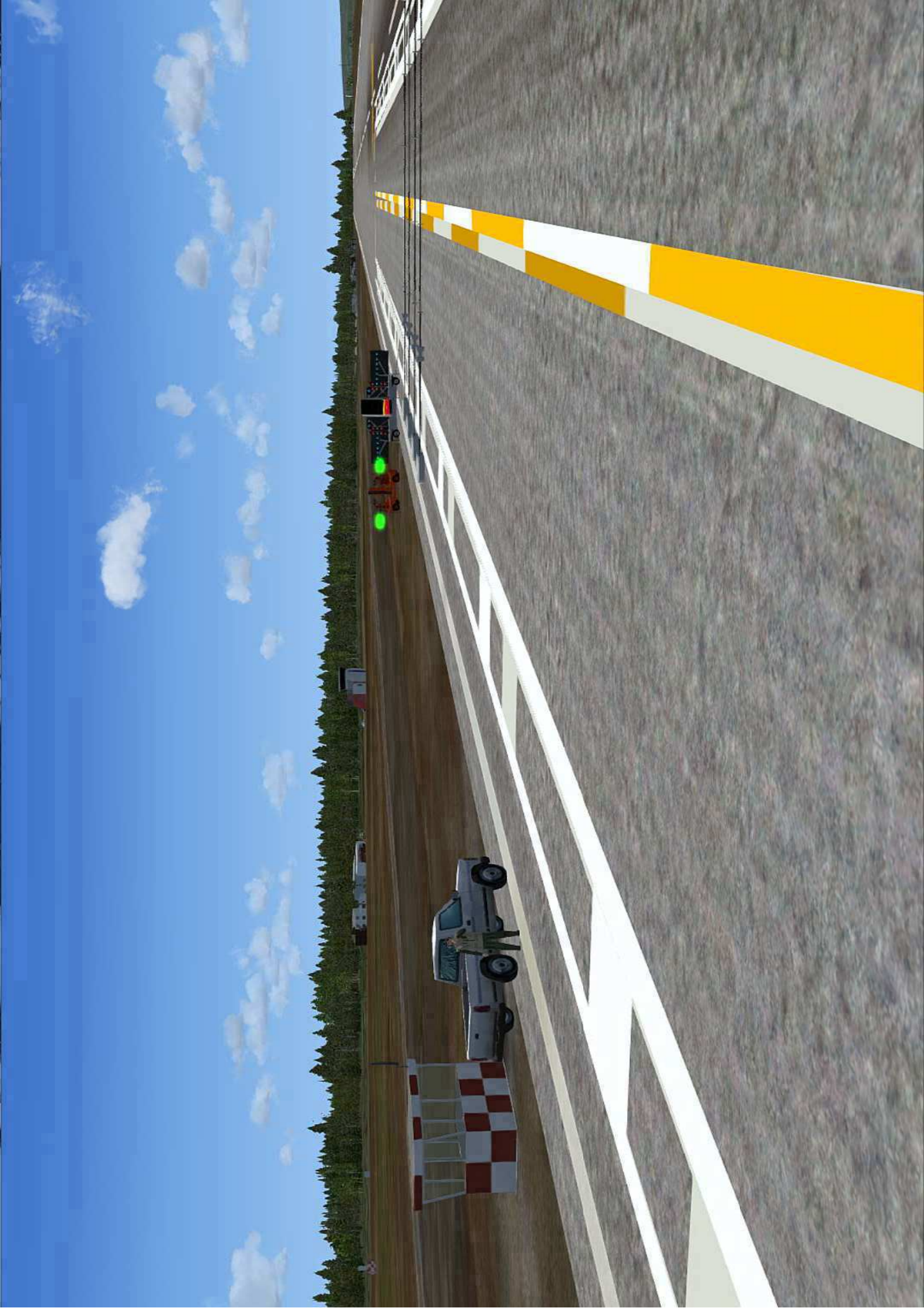
- après appontage remise des gaz
- montée dans l'axe 1/2 piste vers INITIAL 1500' Range 2 NM du TCN
- 1er BREAK 180 1500'
- point DELTA 1200'

INITIAL: 1500' MSL  
 BREAK: 1500' MSL  
 DELTA: 1200' MSL













1330 140 150  
1030 350  
133 W

ET 00:00  
C ON  
F FULL  
M DN  
ATC APR  
D. S KNRA

1	2	3	4	5	6	7	8	9	0
CLR									
CHM 135.900	ROLL	GTTK	HDG	CHM 135.900					
CPL TDN	BALT	RALT	FPAH	CNT					

VOL COM1 COM2 VOL 10

POS/INS 123°/0.5 15 12 133T 133G 33 30 33  
123°/0.5 00:00 Y 061°/0.2 U  
KNRA 8500 T 00:00 Y  
8500 E 0 KNRA P 8500 T  
0 0 21 24  
HSEL 000° ADV-ATC, SNBRS  
FPAH 14:29 TIME/DEC AUTO  
ROLL  
14:29

MODE

AOA: 6.06 deg, VS: -807.87 ft/min

100 120 130 140

100 200

DX -4.0

C 8.7  
8.7

ET 00:00

G DN  
F FULL  
H DN

NLS  
10.2 KNRA

POS/TNS SCL/5 MK1 DATA

095°/0.2 344°/0.4  
00:00 KNRA P  
00:00 KNRA B500 T  
0 0 21 24

ET 00:00  
-0.1C E  
CSEL 140°

HSEL 000°  
ADV-SKID  
SNRS

14:40 TIME/FC AUTO

CHM 135,900

ROLL

GTRK

HDS

CHM 135,900

CPL TCN

BALT

PALT

FPAH

CNI

1 2 3 4 5 6 7 8 9 0

CLR

EXT

NIGHT OFF AUTO DAY

IR COOL ORIDE N OFF

100 200

14:40

INS

BRT

CNT

15 12