


Dressman

MOVIE/T.V.

HORROR MAKE-UP



instruction manual

ressman

© 1976 PRESSMAN TOY CORPORATION, NEW YORK, N.Y. MADE IN U.S.A.

BIOGRAPHY OF DICK SMITH



Dick Smith, one of the top make-up artists in the world, created the frightening demonic make-ups for *THE EXORCIST*. For that film he also invented the special make-up effects that showed Linda Blair's head turning around backwards, her neck swelling like a bullfrog's, and words rising up on the skin of her stomach.

During his thirty years as a make-up man, Dick Smith has done every kind of make-up from beauties to beasts. Perhaps most well-known are his old-age make-ups: Dustin Hoffman transformed to 121 years old in *LITTLE BIG MAN*, Hal Holbrook as *MARK TWAIN*, and Marlon Brando as *THE GODFATHER*.]

Monster make-up was what first fascinated Smith as a youth. After transforming himself into all the classic movie monsters, he decided to become a professional make-up man. Besides *THE EXORCIST* make-up, his favorite monster creation was a "Mr. Hyde" which he did for Jack Palance in 1967.

Smith's love of monsters and his ingenuity have made this make-up kit possible. With the molds, materials and techniques which he designed specifically for young people, you may now create truly horrifying and professional-looking make-ups.

CONTENTS

1 MAKE-UP STICKS PENCIL



6 SPIRIT GUM



2 ANTI DRYING AGENT



7 SPIRIT GUM REMOVER



3 PLAY BLOOD



8 MEASURING SPOONS



4 MOLDS



9 PAPER STUMP AND SPONGE



5 FLEX FLESH



10 PLASTIC TEETH



HORROR MAKE-UP

by
Dick Smith

In movies and TV, make-up artists transform actors' faces with false noses, chins and masks which we call "make-up appliances." With this kit you make your own "appliances" and with them change yourself into many horrible creatures.

I will start with simple instructions and go into detail later. There are complete directions for doing all the horror make-ups on the box cover and for creating many more monsters of your own.

section 1

INTRODUCTION:

There are two types of appliances you make and apply to your face. There are the Facial Feature appliances which are the Nose and Eye and there are the Scar appliances which are a group of 21 different scars including Bullet Holes and Large cuts.

To make any appliance you first make the FLEX-FLESH mixture which then is poured into a mold. If you're making a Facial Feature, the Flex-Flesh is poured into one of the "Two-Part" molds or if you're making a scar, it gets poured into one of the "Tray" molds. After a few minutes, the FLEX-FLESH will harden in the mold. You will then peel it out of the mold and apply it to your face to become a hideous monster.

HOW TO MAKE APPLIANCES:

Contents needed for Section 1
Two-Part and Tray Molds
Set of Measuring Spoons
Flex-Flesh
Anti-Drying Agent
Spreader

You will also need the following supplies which are not included in the set:

A pair of scissors
Any kind of paper or china cup with a round bottom
Some hot water from the faucet
Any talcum or face powder

NOTE: It is best to set up in the kitchen or bathroom near a sink.

NOW, LET'S START!

Step A. HOW TO MAKE "FACIAL FEATURE" APPLIANCES

- Trim all "Two-Part" molds from plastic sheet cutting them with a pair of scissors following outlines shown in Diagram 1.
- Sort out molds marked "U" or Upper Molds and molds marked "L" or Lower molds into matching pairs of noses and eyes. The "U" mold will fit snugly and easily into its matching "L" mold.

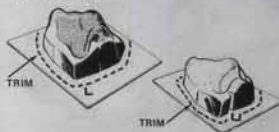


DIAGRAM 1

Step B. MAKING A BATCH OF FLEX-FLESH MIXTURE

- Measure and pour 1 Level Tablespoon of FLEX-FLESH into a paper cup or a china cup with a round bottom.
- Add 1/2 Teaspoon of Anti-Drying Agent (that keeps the appliances soft and moist longer).
- Add 1 Tablespoon of very hot water from the faucet.
- Stir quickly with one of the small measuring spoons for 10-20 seconds. Stir slower at the end to break any large bubbles.

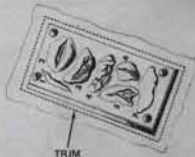


DIAGRAM 1

AMOUNT OF FLEX-FLESH NEEDED FOR MOLDS

Eye mold	1/8 Batch
Nose mold	1/8 Batch
Tray mold	1 Batch

Step C. FORMING FACIAL FEATURE APPLIANCES
 1. Pour FLEX-FLESH into "L" Lower mold of either facial feature you've decided to work with, nose, eye.
 2. Quickly insert corresponding "U" Upper mold into "L" mold (Diagram 2).

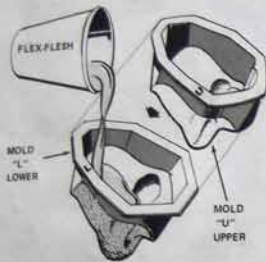


DIAGRAM 2

3. Turn the two molds over and press on TOP EDGES ONLY until excess FLEX-FLESH is squeezed out (Diagram 3).



DIAGRAM 3

Step D. FINISHING APPLIANCES (NOT FREEZER) for 15-20 minutes.
 1. After taking out of refrigerator, separate molds by grasping edges and pulling apart firmly, then seal appliance out. Powder both sides of appliance with powder (any talcum or face powder will do).
 2. Trim off excess edges of the appliances by tearing or cutting with small scissors. Be careful not to trim too much as the appliances need an edge so that they can blend in on your face.
 3. It is best to make the appliances when you plan to use them. If not used right away replace into molds until used and store in refrigerator.

Step E. HOW TO MAKE "SCAR" APPLIANCES
 The SCAR Appliances are made just like the FACIAL FEATURE appliances except that you pour the FLEX-FLESH into a "tray" mold instead of into a "2-Part" mold.
 1. Trim tray molds from plastic sheet by cutting them with a pair of scissors, following outlines shown in (Diagram 4).
 2. Prepare FLEX-FLESH mixture (See "MAKING FLEX-FLESH" Step B).
 3. Pour FLEX-FLESH into one end of tray mold (Diagram 4).

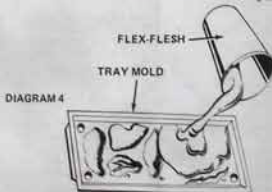


DIAGRAM 4

4. Spread FLEX-FLESH firmly from one end of the tray to the other end with spreader (Diagram 5).

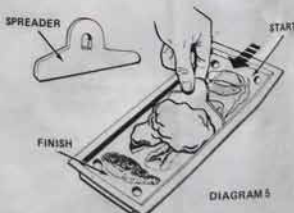


DIAGRAM 5

5. Now finish appliance (See "Finishing Appliance", Step D).
 6. Scars are numbered for identification on tray molds.

HORROR MAKE-UP CONTENTS

Three Tray Molds which make 21 different scars and wounds, etc.
 Two Part Molds which make the following facial features: Nose and eye.

FLEX-FLESH™
 Anti-Drying Agent
 Blood
 Purple Make-Up Color-wrapped in tube
 Base Make-Up Color (Flesh Color)-wrapped in Silver

Black Pencil
 Spirit Gum
 Spirit Gum Remover
 Plastic Teeth
 Measuring Spoons
 Paper Stump
 Sprayer
 Instruction Book

section 2 INTRODUCTION

After making the appliances your next step is to apply them to your face and then complete the make-up by using the make-up colors, and the other accessories provided.

HOW TO APPLY MAKE-UP

GLUING APPLIANCES:

Appliances adhere to the skin with Spirit Gum (or the Washable adhesive described later). Paint Spirit Gum (adhesive) on the back of the appliance. Paint only near the edges of the large appliances. Press the appliance onto the skin. Add adhesive under the edges if the edges do not stay down.

MAKE-UP COLORS:

Apply make-up colors with your fingers. When you want to color precisely, rub the paper stump (a pointed roll of soft paper in the kit, on the make-up color stick and use it like a crayon.

MAKE-UP PENCIL

The make-up pencil marks on your skin but not on FLEX-FLESH unless FLEX-FLESH is coated with MAKE-UP COLOR or if the tip of the pencil is moistened with SPIRIT GUM REMOVER.

POWDER

Powder the make-up if it is too shiny. You can use talcum or face powder. For a puff you can use a ball of cotton or a piece of foam rubber. Pat the powder on and dust off the excess with cotton.

ACCESSORIES:

Add the final touches: Blood, Teeth, Costume and mix up your hair with water or hairspray.

(CAUTION: Be careful not to get make-up or adhesive in your eyes.)

REMOVING MAKE-UP

Peel off the appliances as completely as possible. If removal is not easy, dab Spirit Gum Remover under the edge of appliance.

- Use plenty of warm water and a cloth to wash off any bits of FLEX-FLESH that remain.
- What is left now is Spirit Gum. Put Spirit Gum Remover on a bit of cotton or your fingertips and apply to your skin. Allow it to soak into the Spirit Gum for a minute, then rub gently with your fingers to loosen the gum. Wipe gently with tissue. Rubbing alcohol will also dissolve Spirit Gum.
- Finish up with soap and water or cleansing cream to remove the remains of your make-up. Do not get cream or Spirit Gum Remover in your eyes. They will smart.

WASHABLE ADHESIVE

Spirit Gum sticks so well it is sometimes hard to get appliances off in one piece and use them again. The same is true if it is hard to clean off the skin. You can make an adhesive out of FLEX-FLESH that washes off and lets you take off appliances in one piece. Mix 1 Teaspoon of FLEX-FLESH plus ½ Teaspoon of ANTI-DRYING with 2 Teaspoons of very hot water in a warm teacup. (You can put the teacup in a bowl of warm water so the adhesive will stay liquid longer.) Dip your finger (or bottom of your smallest spoon) in this mixture and paint the back of the appliance and then the area of skin it will cover. Allow both to get tacky, then press on the appliance. (Have a wet paper towel handy to clean your finger.) A few places like the bottom of the nose are hard to stick and need more coats of adhesive and time to dry. You can wipe off excess adhesive on the skin with a damp cloth. Rubbing make-up over a nose or eye appliance attached with Washable Adhesive might make it come loose so it is better to apply as much make-up to the appliance as possible before you put it on. After gluing it, finish the make-up gently. If a spot comes loose, it is easier to use a little Spirit Gum to repair it.

MORE TIPS FOR YOU

- Empty your bag of FLEX-FLESH into an empty jar you'll fill.
- If you mix FLEX-FLESH in a China cup, warm the cup first in hot water so that the material won't thicken too quickly.
- Stand the nose mold in a cup so that you can fill it easily.
- When filling the nose and eye molds with one batch, pour the FLEX-FLESH into both "L" molds first then insert the "U" parts, both over and press one mold with each hand.
- You can make smaller batches of FLEX-FLESH. Remember always to use equal amounts of FLEX-FLESH and hot water. Proportions for the Anti-Drying Agent and FLEX-FLESH are:

FLEX-FLESH	ANTI-DRYING
1 Teaspoon (+3 teaspoons)	Full ½ Teaspoon
2 Teaspoons	not quite ½ Teaspoon
3 Teaspoons	½ Teaspoon

SECTION III

- If you want to get thinner edges on your appliances like a professional make-up man, put the appliance back on the "U" mold, hold a teaspoon in very hot water, then rub it on the thick sides till the heat and the water melt down the FLEX-FLESH and you can smooth out the edge. You will have to slip the spoon in the hot water repeatedly to do this. A round #8 water color brush (brushed) at an art store dipped in hot water and dragged slowly and repeatedly over the edge is even better. Afterward put the mold back in the refrig to cool. Before removing it from the mold, powder its edges.
- Spirit Gum is hard to get out of the hair so before you get any in your eyebrows, rub the soft wet end of a bar of soap over them till they are pasted down and protected.
- Your set of false teeth can be worn with the long fangs on the top or bottom. Also you can discolor them by blackening the edges and spaces between the teeth with your make-up pencil.
- The blood in your kit is safe to put on your lips but don't drink it or get it in your eyes. If you want to thicken it, mix in a little peanut butter (not the crunchy kind!).
- Your hair can be fixed into weird styles with many things. Besides water and hairspray, plain soap, shampoo or shaving cream rubbed in will make hair stringy and stiff (and will come out easily).
- If you get an appliance off and want to save it, give it a quick rinse in water. If it seems stiff or shrunk, then put it back in its mold and cover it with plastic wrap. Store in the refrig.

section 3

Now you know enough to do some make-up, but I suggest that you try some uncomplicated ones first using only a few appliances from the Tray Molds. Paint just a few dabs of Spirit Gum on the back of each appliance so you can try them in different arrangements on your face. Then add make-up, teeth and some blood.

As soon as you have satisfied your first monstrous urge, read on. The more you understand how to use this kit, the more fantastic your monsters will be and the more fun you'll have with them. It's easy when you know how.

DESCRIPTION OF TRAY-MOLD APPLIANCES

Your three tray molds will make 21 different scars, wounds and appliances. Most can be used anywhere on the face. A few are meant for one place but may be used elsewhere as illustrated.



1. Scar — use anywhere



2. Bruised shut left eye — May be used on right eye too. Upper or lower half may be used separately but usually appliance is glued over closed eye in one piece.



MAY BE TILTED



3. A wound — use anywhere



4. Diseased left brow



5. A wound — use anywhere



6. A large cut — use anywhere

7. A long blob — can be used anywhere to build up the facial structure. A cut can be made in it.



8. Diseased right cheekbone



9. Bullet hole — use anywhere



10. Surgical scar — use anywhere



11. Diseased lower lip — half of it may also be used



12. Medium blob — can be used anywhere to build up the facial structure. A cut may be made in it.



13. A small cut — use anywhere



14. Large raised scar — use anywhere



15. Long raised scar — use anywhere



16, 17 Left & right brow - can also be used as fangs.



18. Diseased right brow can be used anywhere.



19. Small blob - can be used anywhere to build up facial structure.



20. Large wound for left cheek but can be used anywhere.



21. Small raised scar.

HORROR MAKE-UPS

I'm going to explain how all of the make-ups on the box cover were done. Copy them if you wish, but I think you may have more fun making your own monsters by trying different combinations of the appliances. The possibilities for more and even scarier creatures are endless. When you copy a make-up photo or diagram, remember that your mirror face is reversed. To copy truly, hold the diagram in front of your mirror and duplicate its reflection. Most of the photos on the cover are reversed so you can copy them directly.

HORROR #1

This is a simple make-up entirely composed of wounds and blood.

1. A cut was made in #12 before gluing it on. Appliance #6 could be used instead of #12.
2. Appliance #13 should be glued on after #20 because it overlaps it. The rest can be applied in any order.
3. Apply flesh color make-up. Pat on some purple in irregular blotches around the wounds like bruises.
4. Apply plenty of blood in the wounds and lean over the sink or newspaper till it stops dripping. Don't let it get into your eyes. It will sting.



HORROR #2 (Cover photo is reversed)

A different horrible eye effect.

1. Glue on the broken nose first.
2. Blacken the slit of appliance #2 and then glue it on in one piece over your closed eye.
3. Add the other appliances in this order since most overlap: #4, #15, #16, #7, #10, #8, #14, #13.
4. Apply flesh color plus purple on all scars. Blacken around your left eye.
5. Try the false teeth with this one.



HORROR #3 (Cover photo is reversed)

Here's a devilish looking creature and easy to do.

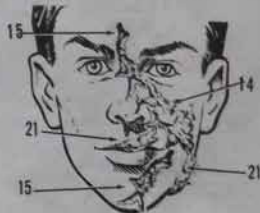
1. Remember to protect your eyebrows with soap.
2. Glue two overlapping #10 appliances so that they cover your upper lip line. Then add #15.
3. Apply the forehead pieces and #8 on your cheek. The #15 scar is last.
4. After putting on the flesh color, blend a lot of purple and black pencil around the eyes. Add purple to the scar.
5. If you dry your upper teeth well with tissue, you can mark them up with black pencil and make your smile look very evil.



HORROR #4 (Cover photo is reversed)

This is the scariest make-up, yet the effect is quite startling.

1. Glue on appliance #15 so that the longest hair runs down the bridge of your nose.
2. Then you can overlap the end of #14 over the short tip of #15 on the side of your nose.
3. Overlap #21 (hatched end downwards) on the bottom end of #14.
4. Actually what you have so far is horrible enough, but if you want more, add a #21 on the upper lip and another #15 over the chin.
5. Apply a little flesh color and then a lot of purple to the scars. A bit of dark red lipstick could also be added to the scars.



HORROR #5 (Cover photo is reversed)

This make-up takes a lot of appliances (17) and more time but it's really ghouly!

1. Remember to protect your eyebrows with soap.
2. Some of the appliances overlap. Put them on in this order! (See next page)





Forehead — #4, #18, #14

Nose — #10 on tip, right half of #11 on right nostril, #18

Cheeks — #8, #20

Lower lip — Paint tooth gum on your lip, let dry; paint pink gum on #11 and apply it.

Chin — #8

Upper lip — #4, #18, #19

Add the remaining appliances

3. Apply flesh color. Use some purple on the lower lip and here and there on the dressed parts to make them more sickly. Rub a little black pencil under the eyes for the same reason.

4. Some peanut butter mixed into blood produces a gloss which looks horrible in the wounds.

5. This creature looks great with the false teeth.

HORROR #6 (Cover photo is reversed)

This is a real-looking bruised and beaten make-up:

1. Apply the broken nose first.

2. Separate the upper and lower halves of appliance #2, the bruised eye. Glue on the upper part so that it pushes your eyelid half closed. Fit the lower part as close under your eye as is comfortable.



3. The other appliances go on in any order. Make a cut in #12 before gluing it on your chin.

4. Apply flesh color to all but #2. Make up the eye pieces with purple and some black pencil rubbed in under the pupils.
5. It was not done in the photo, but you could stuff some wet cotton or tissue between the lips and teeth to make the mouth swollen.
6. The blood trickles and smears should be added last if they are wanted.

HORROR #7 (Not on cover — too gruesome!)

Here's a make-up featuring the horrible eye appliance.

1. Protect your right eyebrow from Spirit Gum by sticking it down with a soft moist bar of soap.

2. Make-up the scarred eye before you glue it on. Blacken the opening with a pen or make-up pencil. Rub flesh make-up color over the rest of the appliance. Then apply purple to the raised scar. Use the paper stump with more purple so color in the deep spots that you can't do with your fingers.

3. Now you can glue the eye on. Use Spirit Gum or Washable Adhesive on the back of the appliance but not in the hollow that covers your eye.

4. Next glue on #18, #6, #7. Leave #15 till last because it goes over the others.

5. All of these pieces may be made up after they're on. Use flesh color first, then tint the scars with purple. You can add a touch of dark lipstick to the scar if it's available. Blacken in the cut on the nose.

6. Draw part of an eyebrow above the bad eye over the edge of the appliance.



7. Lastly muss up your hair and apply blood in the cut and the eye opening. (See photo opposite)

MORE SCAR EFFECTS

You can make great burn scar effects by applying a regular mixture of liquid FLEX-FLESH to your skin. Stir it up with the little mixing spoon as the surface thickens. The faster you stir as it hardens, the more irregular and scar-like the surface will be. Then make it up with some light flesh color and a lot of purple.

If you leave the Anti-Drying Agent out of the formula, the FLEX-FLESH will shrink, drawing the skin in a very scar-like manner, but it is also more likely to crack off.

You can use this direct FLEX-FLESH technique by itself or combined with appliances. FLEX-FLESH can be formed on an Upper Mold instead of the skin; then removed and treated like a molded appliance. It may also be added on top of an appliance. The possibilities are endless.



HORROR MAKE-UP #7

MY YOUNG FRIENDS:

I have been a professional make-up artist for thirty years and I have done all kinds of make-up, but I can still remember the thrills I had when I was young and used to make myself up as monsters.

I hope this make up kit will make it easy for you to have as much fun as I had.

Very sincerely,



BUY ACCESSORIES FOR PRESSMAN HORROR MAKE-UP

Check items required and ADD \$1.00 Mailing and Handling Charges, regardless of how many items ordered.

4 Make-Up Color Sticks and 1 Stamp (Purple, Flesh Color Base, Pale Flesh Highlight, Dark Flesh Shadow, Paper Stamp)	All for \$1.00
Individual Color Sticks as above each	25¢
Black Make-Up Pencil and Maroon Make-Up Pencil (2) for	25¢
Teeth	10¢
5 oz. Flex-Flesh plus 2 oz. Anti-Drying Agent	\$1.00
1/2 oz. Spirit Gum Remover	25¢
1/4 oz. Spirit Gum Adhesive	50¢
Blood	30¢
6 inches Hair	50¢

Print your name and address plainly on the attached label and mail in an envelope with coin or money order (Attach coin ABOVE ADDRESS LABEL WITH SCOTCH TAPE).

Contents: Merchandise

Postmaster: This parcel may be opened for
postal inspection if necessary.

FROM: PRESSMAN TOY CORPORATION
200 FIFTH AVENUE
NEW YORK, N. Y. 10010

NAME _____

ADDRESS _____

CITY _____ STATE _____ ZIP _____

Look for the many other
exciting products from...



The secrets of the magicians are revealed in these "Magic Show" sets. Everything is here to put on your own magic show. Each trick was created so that it would be simple to perform, amazing to behold. Specially designed cover converts to a magician's table and allows you to work from behind it just as real magicians do.



MONSTER MAKE-UP—
Change yourself into a Frankenstein Monster, Mr. Hyde or the Hunchback of Notre Dame or a Monster of your own creation: IT TAKES MINUTES.

Dressman

**preto
magic
now**

**"MONSTER
MAKE-UP"**

House of Magic

Crystal Climbers

Feats of E.S.P.

steel board games

Peaopolis

Tri-Ominos

Dressman